

 GOVERNMENT OF DUBAI	Organization/Unit:	إدارة مختبر دبي المركزي Dubai Central Laboratory Department	الوحدة التنظيمية:	 بلدية دبي Dubai Municipality
	Document Title:	Rules for Marking and Tag Requirements for the Control of Reinforcing Steel Bars	عنوان الوثيقة:	
	Doc Ref.	DM-DCLD-RD-DP21-2091 (IC)	رقم الوثيقة :	

## Table of Contents

REVISION HISTORY .....	2
INTRODUCTION .....	3
SCOPE .....	3
PRODUCT MARKINGS .....	3
TAGS.....	4
SAMPLE MARKINGS .....	4
SUBMISSION, EVALUATION AND APPROVAL OF THE PROPOSED MARKINGS .....	4
Annex 1.....	6

Approved by CQPSM	Authorized by CQPSM
Date of Issue :27/03/2023	Rev. No. : 12
General / عام : Level of Confidentiality / درجة السرية	Page 1 of 9

*Note: Printed copy of this document shall be treated as 'Uncontrolled'. Always refer the controlled version Online*

بيانات مفتوحة / OPEN DATA

 GOVERNMENT OF DUBAI	<b>Organization/Unit:</b> <b>إدارة مختبر دبي المركزي</b> <b>Dubai Central Laboratory Department</b>	<b>الوحدة التنظيمية:</b>	 بلدية دبي Dubai Municipality
	<b>Document Title:</b> <b>Rules for Marking and Tag Requirements for the Control of Reinforcing Steel Bars</b>	<b>عنوان الوثيقة:</b>	
	<b>Doc Ref.</b> <b>DM-DCLD-RD-DP21-2091 (IC)</b>	<b>رقم الوثيقة :</b>	

Issue Date	Rev. No.	Summary Of Amendments
12-12-2007	0	First draft
17-12-2007	0	Issue for use
17-03-2008	1	Minor Revision
20-04-2008	2	Corrected typographical error for ASTM A 615 instead of C 615
19-06-2008	3	Revisions simplifying the marking requirements
05-08-2008	4	Revision to clarify further the numerical system of identifying the manufacturer, consisting of the country code and works (mill) number and revision in the note in the Annex 1
02-04-2009	5	Include clause for submission, evaluation and approval of proposed product markings
16-08-2009	6	Document reference number and format is changed according to the new IMS and update of the standard used ASTM A 615-09
09-05-2013	7	Include the ISO 6935-2:2007 in the standard specifications, update the standard version & corrected some typographical error
19-05-2013	8	Change the example #5 for ISO 6935-2:2007 from “DCL ●●●” to “DCL” only
04-10-2015	9	Revision due to the current version of ASTM A1035:2015 & ASTM A615:2013 & Introduction of numerical no. “4” to indicate the grade 60 of ASTM A615 and numerical no. “6” to indicate the grade 100 of ASTM A1035 as alternative in the bar marking.
28-05-2019	10	Updated as per new DM template and logo
04-10-2022	11	Changing section name and replace HOU to CQPSM
27-03-2023	12	Restructured to align with the new formatting of all documents. Use of New DM Logo

Approved by CQPSM	Authorized by CQPSM
Date of Issue :27/03/2023	Rev. No. : 12
General / عام : Level of Confidentiality / درجة السرية	Page 2 of 9

**Note: Printed copy of this document shall be treated as 'Uncontrolled'. Always refer the controlled version Online**

بيانات مفتوحة / OPEN DATA

 GOVERNMENT OF DUBAI	<b>Organization/Unit:</b> إدارة مختبر دبي المركزي Dubai Central Laboratory Department	<b>الوحدة التنظيمية:</b> Dubai Municipality	 Dubai Municipality
	<b>Document Title:</b> Rules for Marking and Tag Requirements for the Control of Reinforcing Steel Bars	<b>عنوان الوثيقة:</b>	
	<b>Doc Ref.</b> DM-DCLD-RD-DP21-2091 (IC)	<b>رقم الوثيقة :</b>	

## 1. INTRODUCTION

In accordance with the Special Rules (DM-DCLD-RD-DP21-2002 (IC)) for the control of reinforcing steel bars in the Emirate of Dubai, products that have been certified by DCLD shall bear the DCLD Conformity Mark and other required markings as per the requirements of the relevant standards. This document provides details of the markings and tags that are required to be applied to the certified products.

## 2. SCOPE

- 2.1 These requirements are applicable to all products (whether imported or locally manufactured) covered by DM Circular No. (159) 2007, and certified by DCLD under the Factory Assessment Scheme.
- 2.2 As per the Special Rules, the products covered by this document are those meeting the requirements of the following standard specifications:
  - a. BS 4449:2005
  - b. BS 4449:1997 with amendment 1
  - c. ASTM A 615/A 615M
  - d. ASTM A 1035
  - e. ISO 6935-2

## 3. PRODUCT MARKINGS

- 3.1 The markings on the reinforcing steel bars shall be as per the requirements of the standard specifications.
- 3.2 Additional marking shall be rolled on the steel bars as follows:
  - 3.2.1 For steel conforming and certified to BS 4449:2005, the following shall be marked on the steel, in addition to the markings as required by the standard:
    - 3.2.1.1 The letters "DCL" to denote the beginning of the mark
    - 3.2.1.2 "••" to indicate Grade 500
  - 3.2.2 For steel conforming and certified to BS 4449:1997 Amendment 1, the following shall be marked on the steel, in addition to the markings as required by the standard:
    - 3.2.2.1 The letters "DCL" to denote the beginning of the mark
    - 3.2.2.2 "•" to indicate Grade 460
    - 3.2.2.3 Country Code as per Table C.1 of BS 4449:2005
    - 3.2.2.4 Mill Number as manufacturer's identification according to clause 15.2 of BS 4449: 1997(refer to clause 3.2.6)
  - 3.2.3 For steel conforming and certified to ASTM A 615/A 615M, the following shall be marked on the steel, in addition to the markings as required by the standard:
    - 3.2.3.1 The letters "DCL" to denote the beginning of the mark
    - 3.2.3.2 Mill Number (refer to clause 3.2.6)

Approved by CQPSM	Authorized by CQPSM
Date of Issue :27/03/2023	Rev. No. : 12
General / عام : <b>Level of Confidentiality / درجة السرية</b>	Page 3 of 9

**Note: Printed copy of this document shall be treated as 'Uncontrolled'. Always refer the controlled version Online**

بيانات مفتوحة / OPEN DATA

 GOVERNMENT OF DUBAI	<b>Organization/Unit:</b> إدارة مختبر دبي المركزي Dubai Central Laboratory Department	<b>الوحدة التنظيمية:</b> 	 Dubai Municipality
	<b>Document Title:</b> Rules for Marking and Tag Requirements for the Control of Reinforcing Steel Bars	<b>عنوان الوثيقة:</b> 	
	<b>Doc Ref.</b> DM-DCLD-RD-DP21-2091 (IC)	<b>رقم الوثيقة :</b> 	

3.2.4 For steel conforming and certified to ASTM A 1035, the following shall be marked on the steel, in addition to the markings as required by the standard:

3.2.4.1 The letters “DCL” to denote the beginning of the mark;

3.2.4.2 Mill Number (refer to clause 3.2.6).

3.2.5 For steel conforming and certified to ISO 6935-2, the following shall be marked on the steel, in addition to the markings as required by the standard:

3.2.5.1 The letters “DCL” to denote the beginning of the mark

3.2.5.2 Mill Number (refer to clause 3.2.6).

3.2.6 Mill Number is the factory identification number to be proposed and submitted by the manufacturer and subject to the approval by the DCLD.

3.2.7 The manner of indicating the Mill Number and the Country Code shall be in accordance with any of the methods given in clause C.1.3 of BS 4449: 2005.

3.3 Steel bar manufacturers shall submit to DCLD-CQPS for approval the proposed marking requirements to indicate the above mentioned markings.

#### 4. TAGS

4.1 Tags shall be affixed to every bundle of reinforcing steel bars.

4.2 Tags shall contain the following minimum information:

- Manufacturer's name
- Country of origin
- Standard specification number
- Steel grade
- Size (nominal diameter x length)
- Heat number
- DCLD Mark

#### 5. SAMPLE MARKINGS

Please refer to Annex 1.

#### 6. SUBMISSION, EVALUATION AND APPROVAL OF THE PROPOSED MARKINGS

6.1 The audited steel bar manufacturer shall submit to DCLD-CQPS the proposed product markings for evaluation and approval immediately after the audit.

Approved by CQPSM	Authorized by CQPSM
Date of Issue :27/03/2023	Rev. No. : 12
General / عام : <b>Level of Confidentiality / درجة السرية</b>	Page 4 of 9

**Note: Printed copy of this document shall be treated as 'Uncontrolled'. Always refer the controlled version Online**

بيانات مفتوحة / OPEN DATA

 GOVERNMENT OF DUBAI	<b>Organization/Unit:</b>	إدارة مختبر دبي المركزي <b>Dubai Central Laboratory Department</b>	الوحدة التنظيمية:	 Dubai Municipality
	<b>Document Title:</b>	<b>Rules for Marking and Tag Requirements for the Control of Reinforcing Steel Bars</b>	عنوان الوثيقة:	
	<b>Doc Ref.</b>	<b>DM-DCLD-RD-DP21-2091 (IC)</b>	رقم الوثيقة :	

- 6.2 The proposed product markings shall be evaluated by the concerned lead auditor and any discrepancy/ies with the product marking requirements as per clause 3 (above) shall be coordinated to the steel bar manufacturer.
- 6.3 Correction and/or amendment, if any, shall be made by the steel bar manufacturer and submit to DCLD-CQPS for re-evaluation and approval.
- 6.4 Approval of the proposed product markings shall be communicated by DCLD-CQPS (preferably by the lead auditor) to the steel bar manufacturer (by any means) and to be kept in the appropriate records.
- 6.5 DCLD-CQPS approved product markings and tags shall be incorporated by the certified steel bar manufacturer in all the grades and sizes of steel bars covered by the Scope of Certification before DCLD-CQPS set deadline and/or after six (6) months upon receipt of the DCLD Certificate of Product Conformity.
- 6.6 If required, DCLD-CQPS may ask the steel bar manufacturer after the end of the aforementioned time limit, to send actual samples of the certified steel bars bearing the approved product markings.

Approved by CQPSM	Authorized by CQPSM
Date of Issue :27/03/2023	Rev. No. : 12
General / عام : <b>Level of Confidentiality / درجة السرية</b>	Page 5 of 9

**Note: Printed copy of this document shall be treated as 'Uncontrolled'. Always refer the controlled version Online**

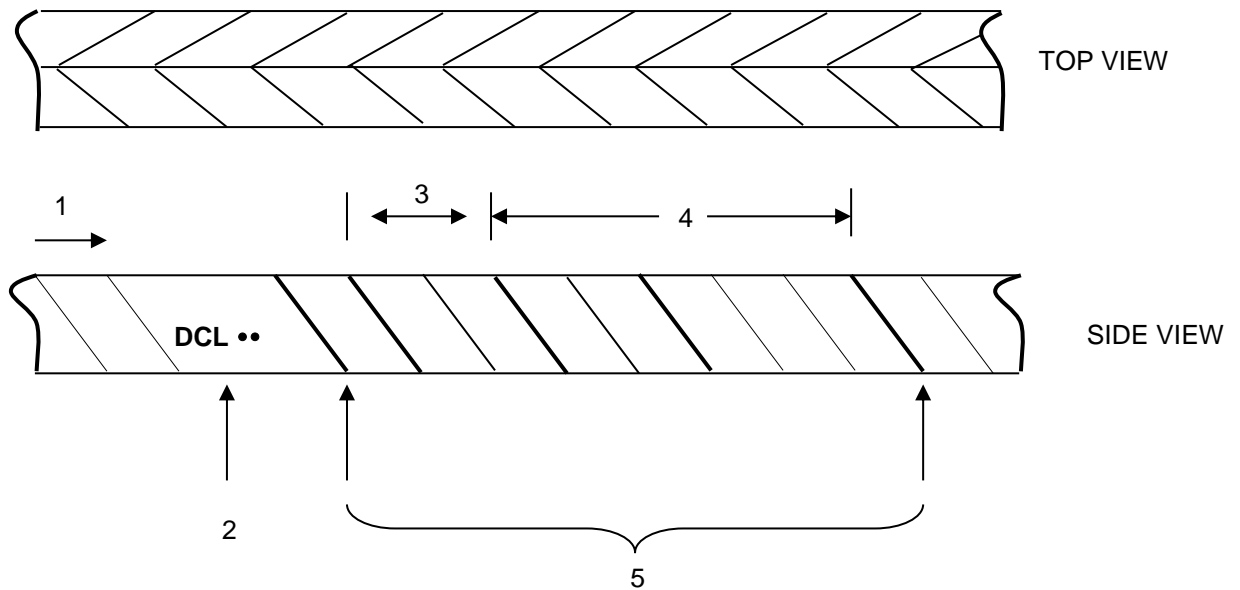
بيانات مفتوحة / OPEN DATA

 GOVERNMENT OF DUBAI	<b>Organization/Unit:</b> إدارة مختبر دبي المركزي Dubai Central Laboratory Department	<b>الوحدة التنظيمية:</b> 	 بلدية دبي Dubai Municipality
	<b>Document Title:</b> Rules for Marking and Tag Requirements for the Control of Reinforcing Steel Bars	<b>عنوان الوثيقة:</b> 	
	<b>Doc Ref.</b> DM-DCLD-RD-DP21-2091 (IC)	<b>رقم الوثيقة :</b> 	

## ANNEX 1

### EXAMPLE OF IDENTIFICATION / MARKING OF REINFORCED STEEL BARS

**EXAMPLE 1:** Marking Requirements for BS 4449:2005 Grade B500B (Two Rib series that are at contrary angles to the others); with the DCLD Mark and 2 dots to indicate grade 500; with 1 as a country code and mill number of 12 (1 & 2)



#### KEY

- Direction of reading
- Start of reading; to indicate DCL Mark + Grade 500
- Country Code (1)
- Mill Number (12)
- Numerical system identifying the manufacturer, consisting of the country of origin and the works (mill number) shall use one of the following methods:
  - Number of normal ribs in between widened rib (see above example)
  - Number of normal ribs in between missing ribs
  - numbers on the surface of the bar
  - rolled or indented marks with a number of normal ribs in between them

**NOTE:** The Symbol Indicating the start of the mark shall be DCL .. plus one of the following:

- Where the marking method uses widened ribs, the symbol identifying the start of the mark shall consist of two consecutive widened ribs
- Where the marking method uses missing ribs, the symbol identifying the start of the mark shall consist of two consecutive missing ribs.
- Where numbers are rolled onto the bar, the symbol indicating the start of the mark shall be an X or O
- Where marks are rolled or indented onto the surface of the bar, the start of the mark shall consist of a clearly identifiable starting symbol or two marks between one pair of normal ribs

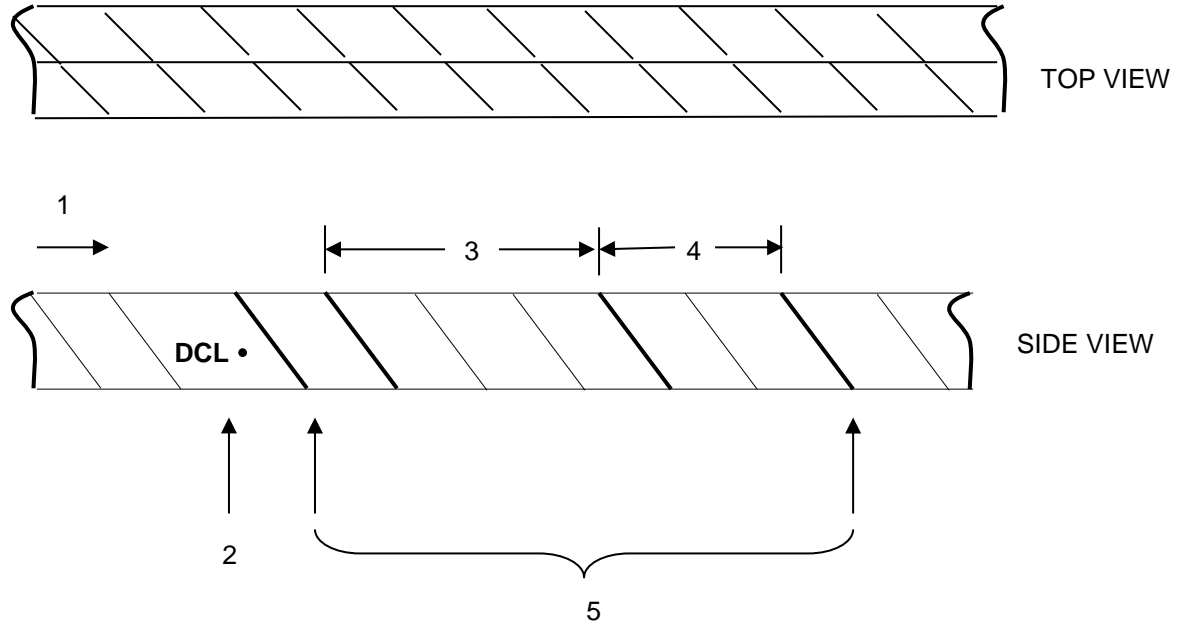
Approved by CQPSM	Authorized by CQPSM
Date of Issue :27/03/2023	Rev. No. : 12
General / عام : Level of Confidentiality / درجة السرية	Page 6 of 9

**Note:** Printed copy of this document shall be treated as 'Uncontrolled'. Always refer the controlled version Online

بيانات مفتوحة / OPEN DATA

 GOVERNMENT OF DUBAI	<b>Organization/Unit:</b> إدارة مختبر دبي المركزي Dubai Central Laboratory Department	<b>الوحدة التنظيمية:</b> 	 بلدية دبي Dubai Municipality
	<b>Document Title:</b> Rules for Marking and Tag Requirements for the Control of Reinforcing Steel Bars	<b>عنوان الوثيقة:</b> 	
	<b>Doc Ref.</b> DM-DCLD-RD-DP21-2091 (IC)	<b>رقم الوثيقة :</b> 	

**EXAMPLE 2:** Marking Requirements for BS 4449:1997 with amendment 1 Grade 460A (Two Rib series that are at the same angles of inclination and same direction for each series); with DCLD Mark and 1 dot to indicate grade 460; with country code of 2; with mill number 1



#### KEY

- Direction of reading
- Start of reading; to indicate DCLD Mark + Grade 460
- Country Code (2)
- Mill Number (1)
- Numerical system identifying the manufacturer, consisting of the country of origin and the works (mill number) shall use one of the following methods:
  - Number of normal ribs in between widened rib (see above example)
  - Number of normal ribs in between missing ribs
  - numbers on the surface of the bar
  - rolled or indented marks with a number of normal ribs in between them

**NOTE:** The Symbol Indicating the start of the mark shall be DCL • plus one of the following:

- Where the marking method uses widened ribs, the symbol identifying the start of the mark shall consist of two consecutive widened ribs
- Where the marking method uses missing ribs, the symbol identifying the start of the mark shall consist of two consecutive missing ribs.
- Where numbers are rolled onto the bar, the symbol indicating the start of the mark shall be an X or O
- Where marks are rolled or indented onto the surface of the surface, the start of the mark shall consist of a clearly identifiable starting symbol or two marks between one pair of normal ribs

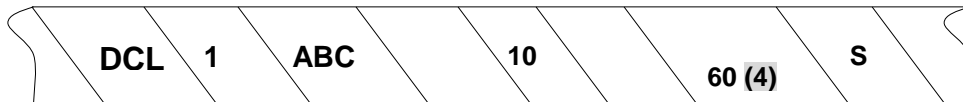
Approved by CQPSM	Authorized by CQPSM
Date of Issue :27/03/2023	Rev. No. : 12
General / عام : Level of Confidentiality / درجة السرية	Page 7 of 9

**Note:** Printed copy of this document shall be treated as 'Uncontrolled'. Always refer the controlled version Online

بيانات مفتوحة / OPEN DATA

 GOVERNMENT OF DUBAI	Organization/Unit:	إدارة مختبر دبي المركزي Dubai Central Laboratory Department	الوحدة التنظيمية:	 بلدية دبي Dubai Municipality
	Document Title:	Rules for Marking and Tag Requirements for the Control of Reinforcing Steel Bars	عنوان الوثيقة:	
	Doc Ref.	DM-DCLD-RD-DP21-2091 (IC)	رقم الوثيقة :	

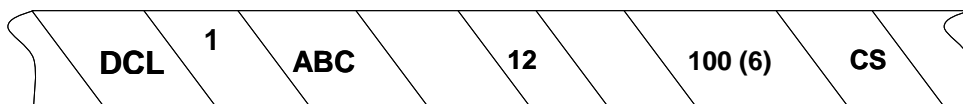
**EXAMPLE 3:** Marking Requirements for ASTM A 615/A 615M Grade 60 (DCLD Mark, Mill Number 1, ABC Manufacturer, 10 mm diameter size, grade 60 ( or a single continuous longitudinal line through at least five spaces), and S is the type of Steel)



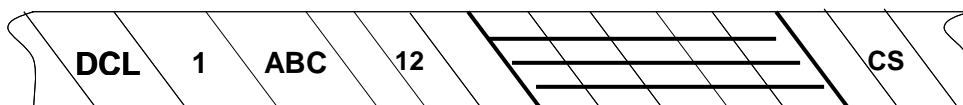
or



**EXAMPLE 4:** Marking Requirements for ASTM A1035 Grade100 (DCLD Mark, Mill No. 1, ABC Manufacturer, 12 mm diameter size, grade 100 (or three continuous longitudinal line through at least five spaces), and CS is the type of Steel)



or



NOTE:

1. Manufacturers may use other symbol to indicate the mill number

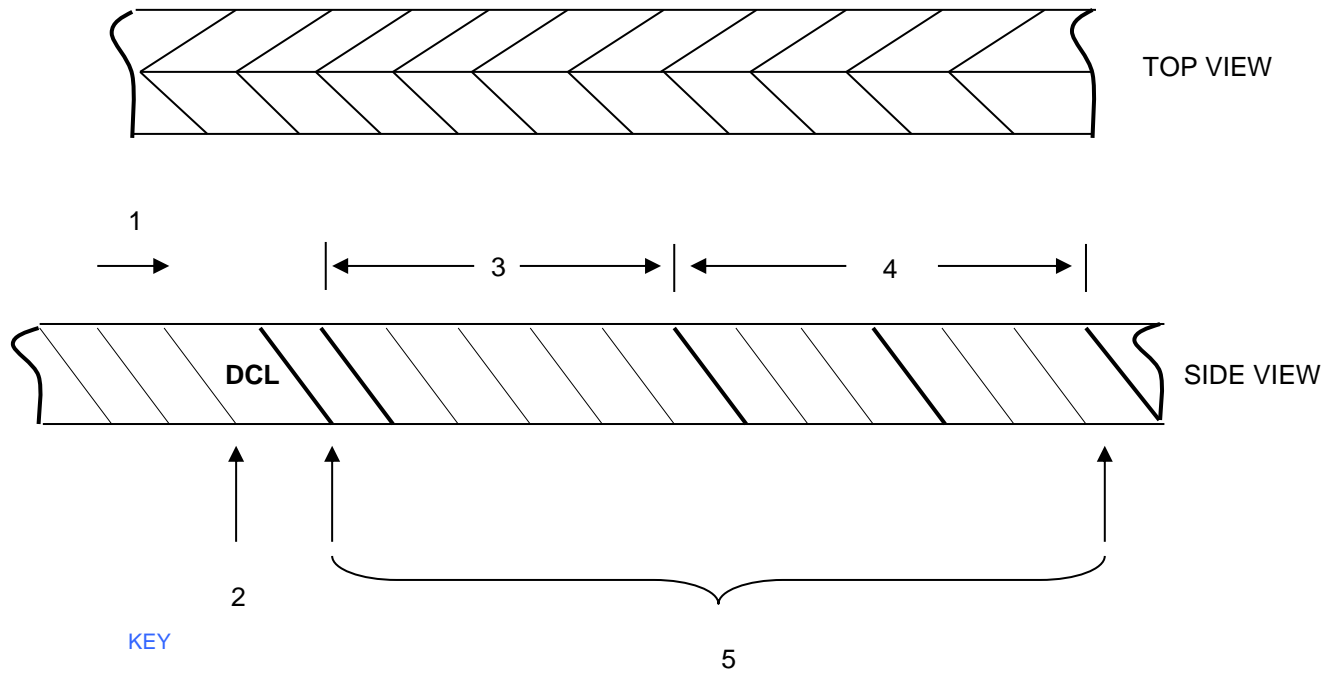
Approved by CQPSM	Authorized by CQPSM
Date of Issue :27/03/2023	Rev. No. : 12
General / عام : Level of Confidentiality / درجة السرية	Page 8 of 9

Note: Printed copy of this document shall be treated as 'Uncontrolled'. Always refer the controlled version Online

بيانات مفتوحة / OPEN DATA

 GOVERNMENT OF DUBAI	Organization/Unit:	إدارة مختبر دبي المركزي Dubai Central Laboratory Department	الوحدة التنظيمية:	 بلدية دبي Dubai Municipality
	Document Title:	Rules for Marking and Tag Requirements for the Control of Reinforcing Steel Bars	عنوان الوثيقة:	
	Doc Ref.	DM-DCLD-RD-DP21-2091 (IC)	رقم الوثيقة :	

**EXAMPLE 5: Marking Requirements for ISO 6935-2 Grade B500B-R (Two Rib series that are at contrary angles to the others); with the DCLD Mark and 3 dots to indicate that steel bar is produced as per ISO 6935-2; with 4 as a country code and mill number of 22 (2 & 2)**



1. Direction of reading
2. Start of reading; to indicate DCL Mark + ISO 6935-2
3. Country Code (4)
4. Mill Number (22)
5. Numerical system identifying the manufacturer, consisting of the country of origin and the works (mill number) shall use one of the following methods:
  - 5.1 Number of normal ribs in between widened rib (see above example)
  - 5.2 Number of normal ribs in between missing ribs
  - 5.3 numbers on the surface of the bar
  - 5.4 rolled or indented marks with a number of normal ribs in between them

**NOTE:** The Symbol indicating the start of the mark shall be DCL plus one of the following:

1. Where the marking method uses widened ribs, the symbol identifying the start of the mark shall consist of two consecutive widened ribs
2. Where the marking method uses missing ribs, the symbol identifying the start of the mark shall consist of two consecutive missing ribs.
3. Where numbers are rolled onto the bar, the symbol indicating the start of the mark shall be an X or O
4. Where marks are rolled or indented onto the surface of the surface, the start of the mark shall consist of a clearly identifiable starting symbol or two marks between one pair of normal ribs

**GENERAL NOTE:**

1. The above illustrations are just examples, manufacturers may have the different sequence of putting the marks on the bar length, provided the requirements of this Rule and the standard specifications are complied.
2. The angle of inclination of ribs shall be in accordance with the requirements of the relevant standard.

Approved by CQPSM	Authorized by CQPSM
Date of Issue :27/03/2023	Rev. No. : 12
General / عام : Level of Confidentiality / درجة السرية	Page 9 of 9

**Note:** Printed copy of this document shall be treated as 'Uncontrolled'. Always refer the controlled version Online

بيانات مفتوحة / OPEN DATA