

ELEMENTS OF TRADITIONAL ARCHITECTURE IN HATTA

Detailed Guidelines



**His Highness Sheikh Hamdan bin Mohammed
bin Rashid Al Maktoum**
Crown Prince of Dubai
and Chairman of the Executive Council of Dubai



His Highness Sheikh Mohammed bin Rashid Al Maktoum
Vice President and Prime Minister of the UAE
and Ruler of Dubai



His Highness Sheikh Hamdan bin Rashid Al Maktoum
Deputy Ruler of Dubai, UAE Minister of Finance
and Chairman of Dubai Municipality



ELEMENTS OF TRADITIONAL ARCHITECTURE IN HATTA

CONTENTS*

Page 6	Page 84	Page 156
A - PLANS	F - DOORS	K - STRIP DECORATIVE
Page 20	Page 100	Page 168
B - ELEVATIONS	G - WINDOWS	L - TRADITIONAL GUTTER
Page 40	Page 110	Page 174
C - SECTIONS	H - RECESSES	M - ACCESSORIES DETAILS
Page 56	Page 124	Page 184
D - ARCHES	I - PARAPETS	N - STRUCTURAL DETAILS
Page 76	Page 136	Page 194
E - COLUMNS	J - TRADITIONAL AREESH	O - OTHER TRADITIONAL DOORS & WINDOWS

*All the drawings (CAD FILES) can be purchased separately from the Architectural Heritage & Antiquities Department.
Contact Details: Tel: +971 04 353 9090, Fax: +971 04 353 9896



Introduction

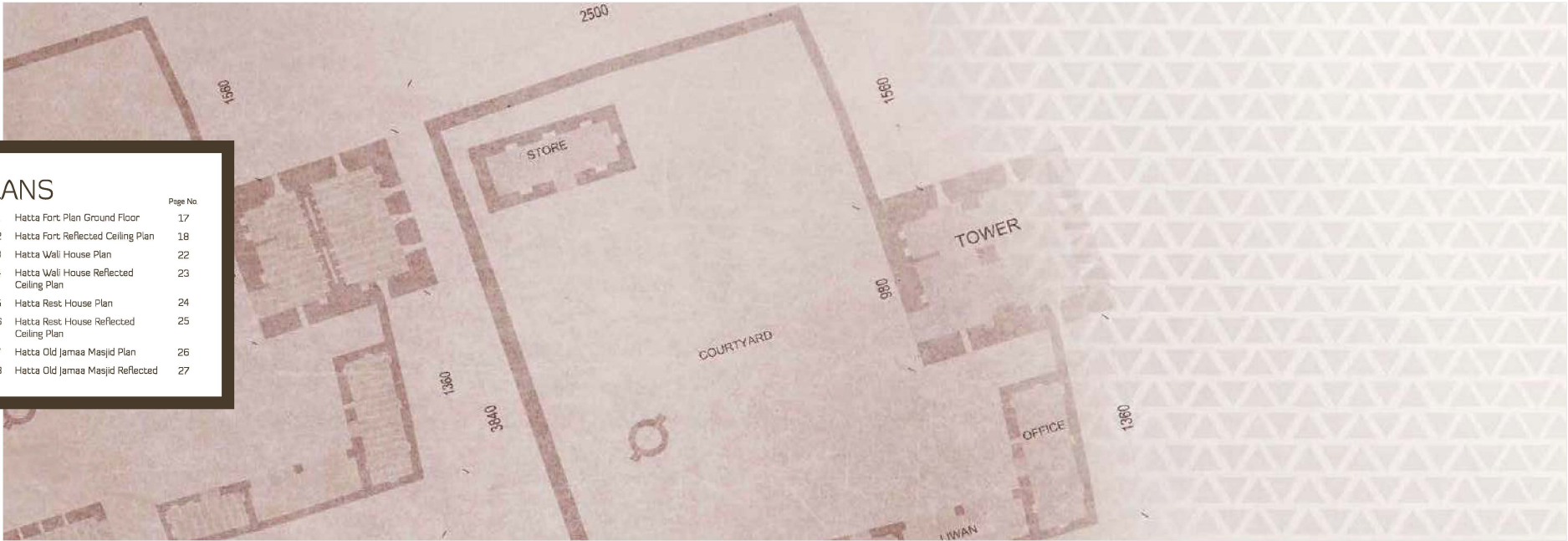
Dubai Municipality's Architectural Heritage & Antiquities Department has always given great attention to the Arab identity, and the interest in its architectural heritage was not an outcome of an incident or occasion, but is a historical and human responsibility in order to contribute to the preserving of the landmarks of the past, for the future generations to see.

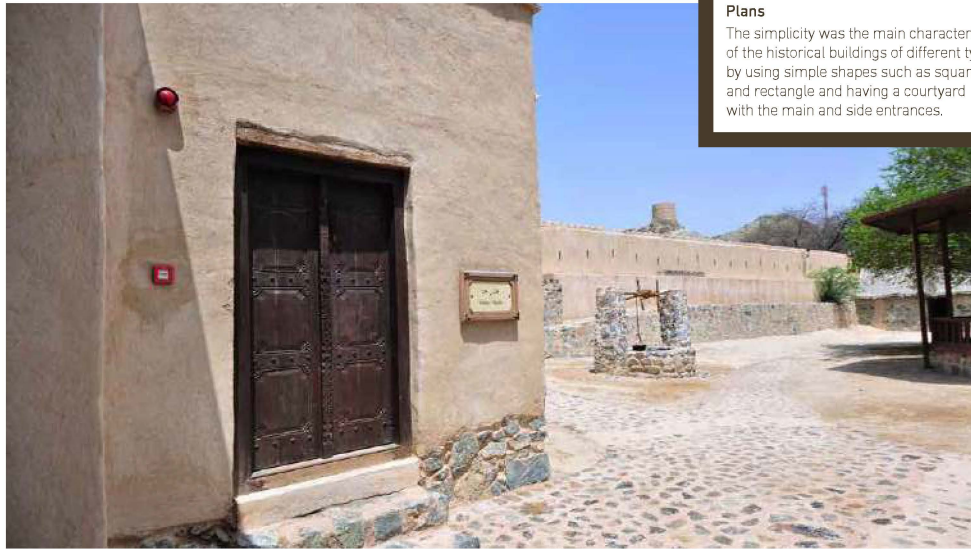
Architectural heritage or the traditional architectural elements are considered basic symbols of human development through the centuries, as they express the capabilities and potential that humans have achieved in dealing with the surrounding environment. Tradition means transferring the culture of the past generations to the present; and this is not limited to language, literature and thoughts, but embraces all sentimental and material elements of the society such as its thoughts, religion, philosophy, science, art and development.

In continuation of the series of books and publications issued by Dubai Municipality such as "Elements of Traditional Architecture in Dubai-Coastal Architecture," the new book "Elements of Traditional Architecture in Hatta/Mountain Architecture" highlights an important segment on inspirations from the aesthetics of Dubai heritage, its traditional architectural vocabulary developed by their ancestors over the years. Moreover, it brings up a whole image of the architectural heritage elements of Hatta's historical area with all what it has to offer from authentic design solutions integrated with the individual needs in the society back then.

The interest of recording, documenting and learning the urban and architectural heritage is a natural extension of the interest on the present citizens and their development, awareness and knowledge of their heritage. It generates strong people who are proud of their past, aware of their present and are welcoming their future.

PLANS	
	Page No
▪ A-1 Hatta Fort Plan Ground Floor	17
▪ A-2 Hatta Fort Reflected Ceiling Plan	18
▪ A-3 Hatta Wall House Plan	22
▪ A-4 Hatta Wall House Reflected Ceiling Plan	23
▪ A-5 Hatta Rest House Plan	24
▪ A-6 Hatta Rest House Reflected Ceiling Plan	25
▪ A-7 Hatta Old Jamaa Masjid Plan	26
▪ A-8 Hatta Old Jamaa Masjid Reflected	27





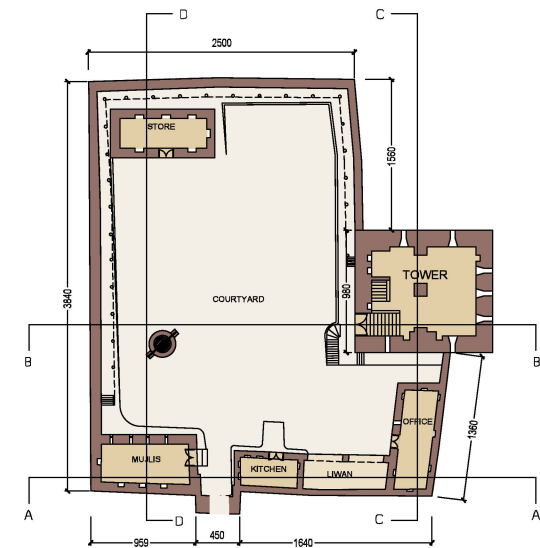
A view from courtyard – Hatta Fort

Plans

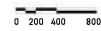
The simplicity was the main characteristic of the historical buildings of different types by using simple shapes such as square and rectangle and having a courtyard with the main and side entrances.

A-1 HATTA FORT PLAN

GROUND FLOOR

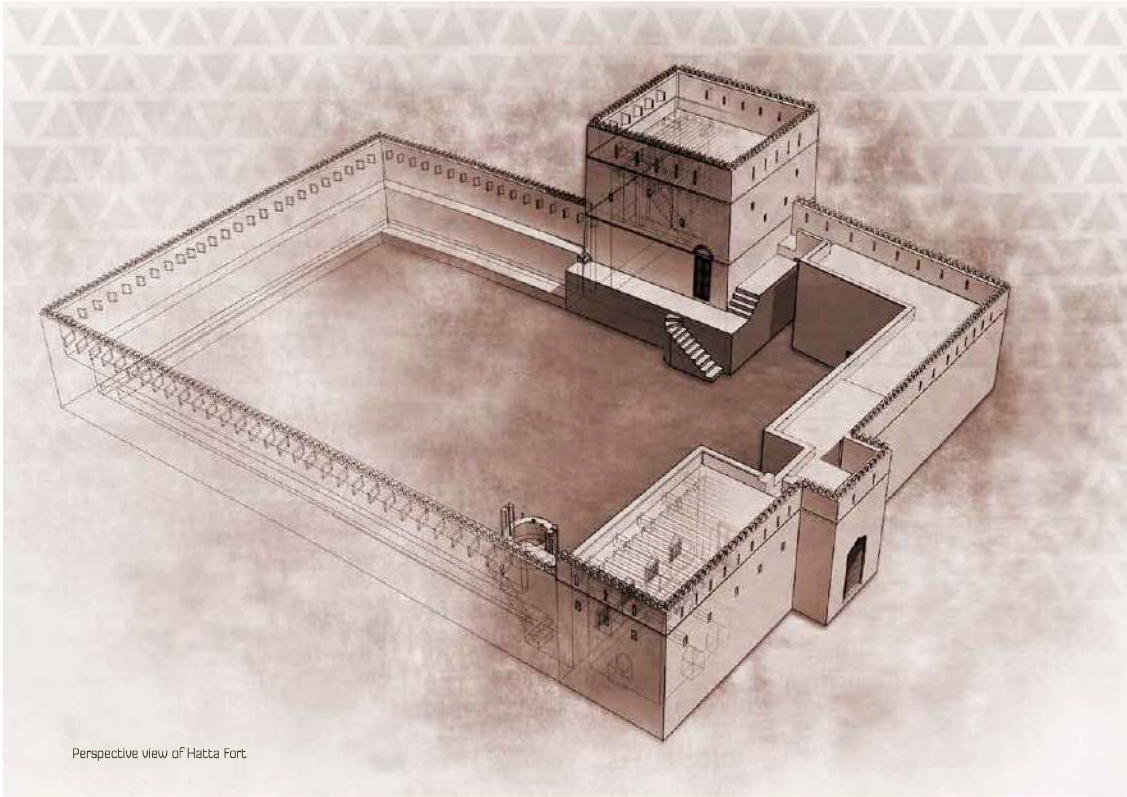
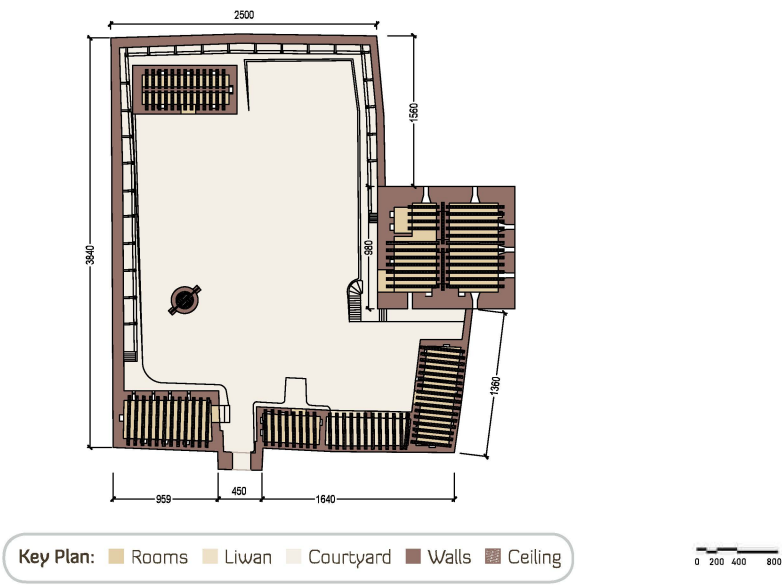


Key Plan: Rooms Liwan Courtyard Walls



A-2 HATTA FORT PLAN

REFLECTED CEILING PLAN





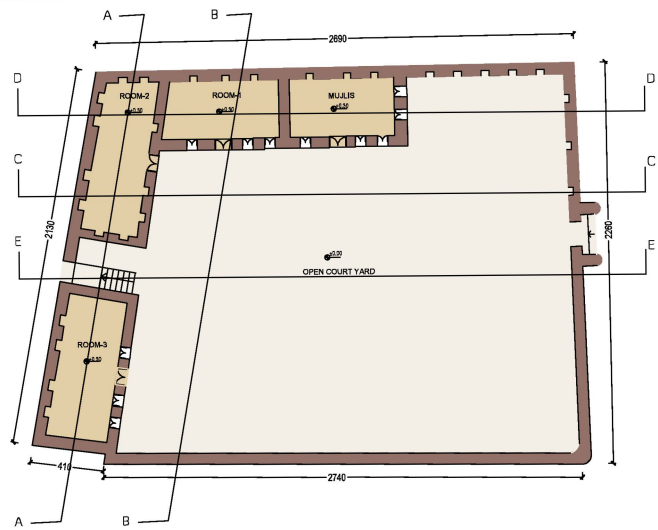
A view from courtyard – Hatta Fort



A view from courtyard – Hatta Fort

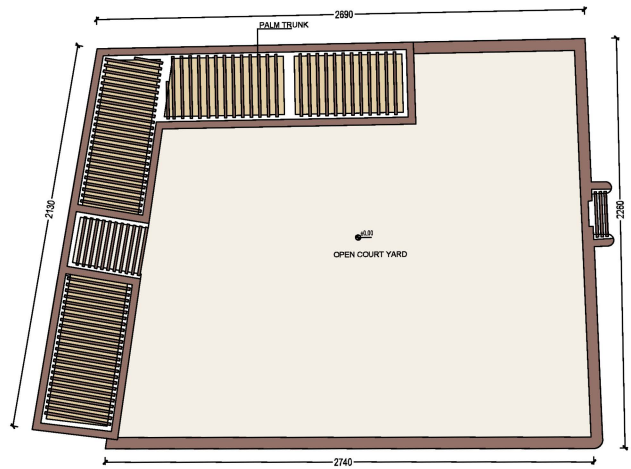
A-3 HATTA WALI HOUSE PLAN

GROUND FLOOR



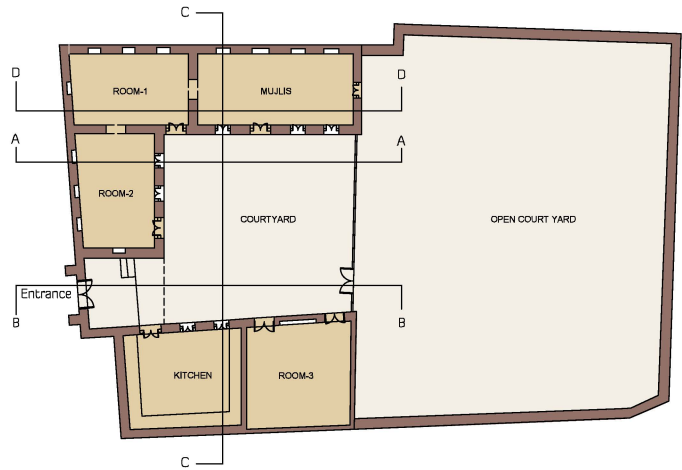
A-4 HATTA WALI HOUSE PLAN

REFLECTED CEILING PLAN



A-5 HATTA REST HOUSE PLAN

GROUND FLOOR

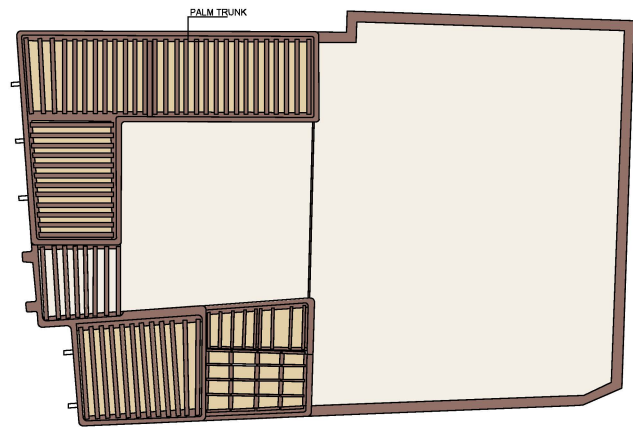


Key Plan: Rooms Liwan Courtyard Walls



A-6 HATTA REST HOUSE PLAN

REFLECTED CEILING PLAN

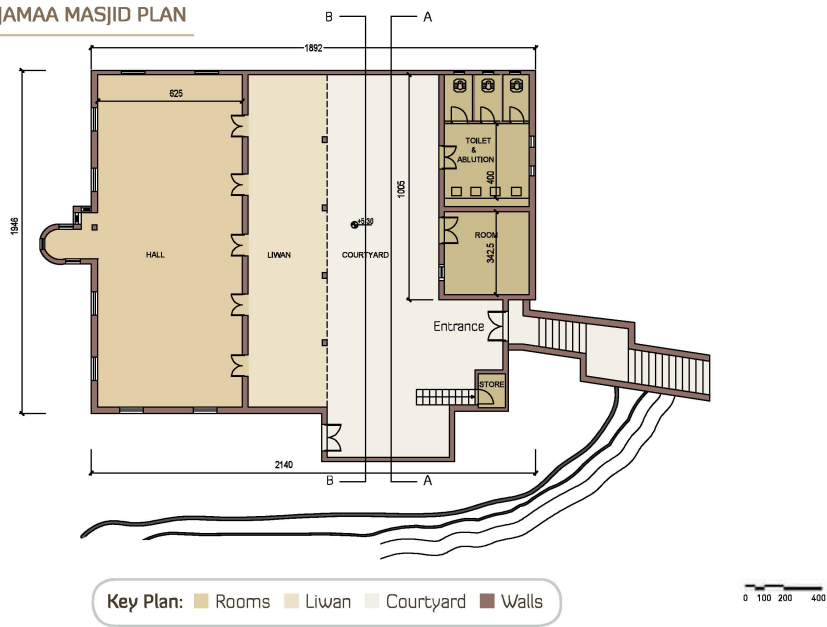


Key Plan: Rooms Liwan Courtyard Walls Ceiling



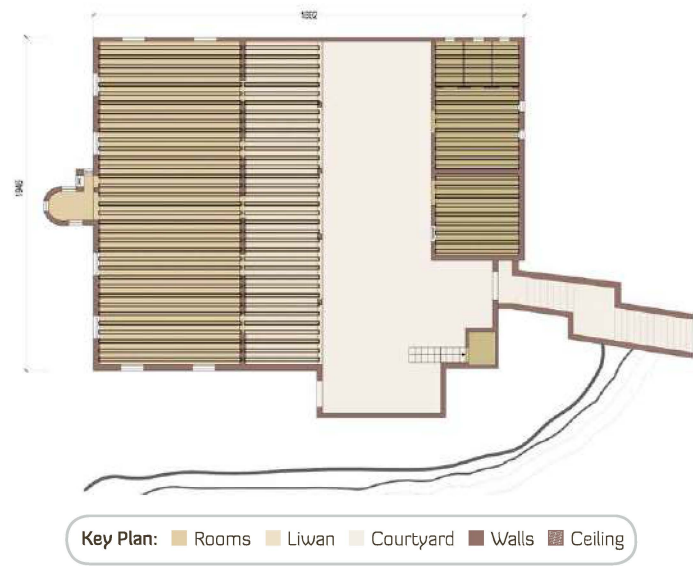
A-7 HATTA OLD JAMAA MASJID PLAN

GROUND FLOOR



A-8 HATTA OLD JAMAA MASJID PLAN

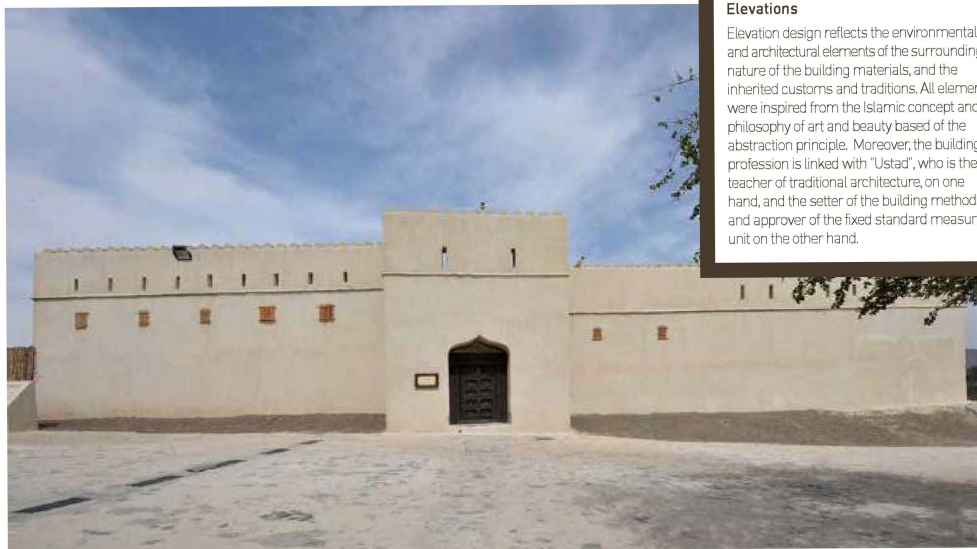
REFLECTED



ELEVATIONS

	Page No.
▪ B-1 Hatta Fort South & North Side Elevations	31
▪ B-2 Hatta Fort West & East Side Elevations	32
▪ B-3 Hatta Rest House Elevations	34
▪ B-4 Hatta Old Jamaa Masjid East & South Elevations	36
▪ B-5 Hatta Old Jamaa Masjid North & West Side Elevations	38
▪ B-6 Hatta Shop Elevation & Section	42
▪ B-11 Hatta Shop Elevation, Section & Details	47





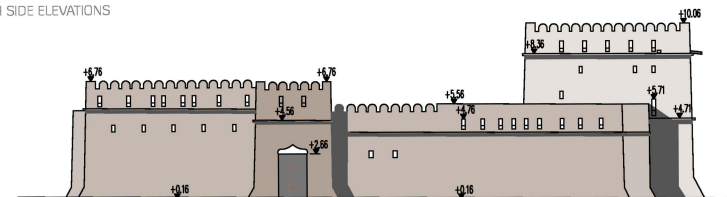
The main facade of Hatta Fort

Elevations

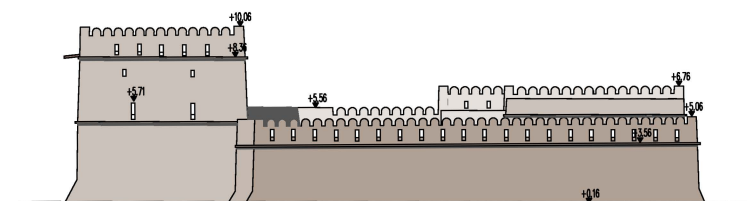
Elevation design reflects the environmental and architectural elements of the surroundings, nature of the building materials, and the inherited customs and traditions. All elements were inspired from the Islamic concept and philosophy of art and beauty based of the abstraction principle. Moreover, the building profession is linked with "Ustad", who is the teacher of traditional architecture, on one hand, and the setter of the building methods and approver of the fixed standard measuring unit on the other hand.

B-1 HATTA FORT

SOUTH & NORTH SIDE ELEVATIONS



SOUTH ELEVATION

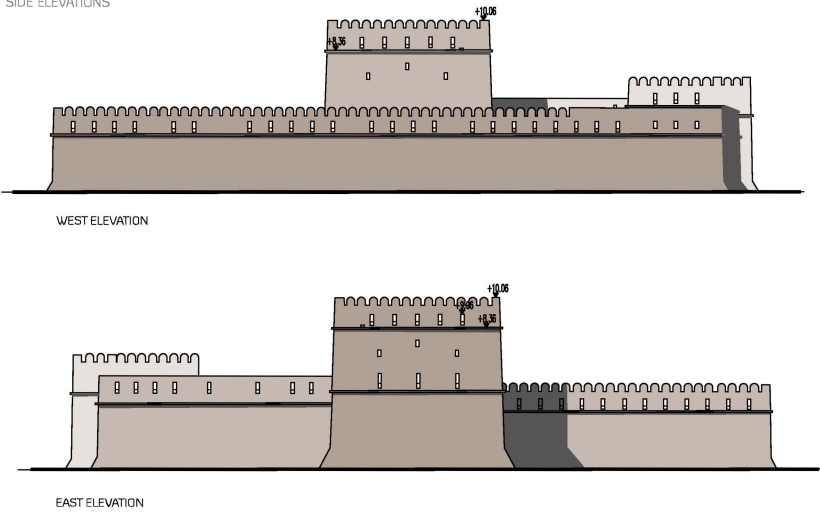


NORTH ELEVATION



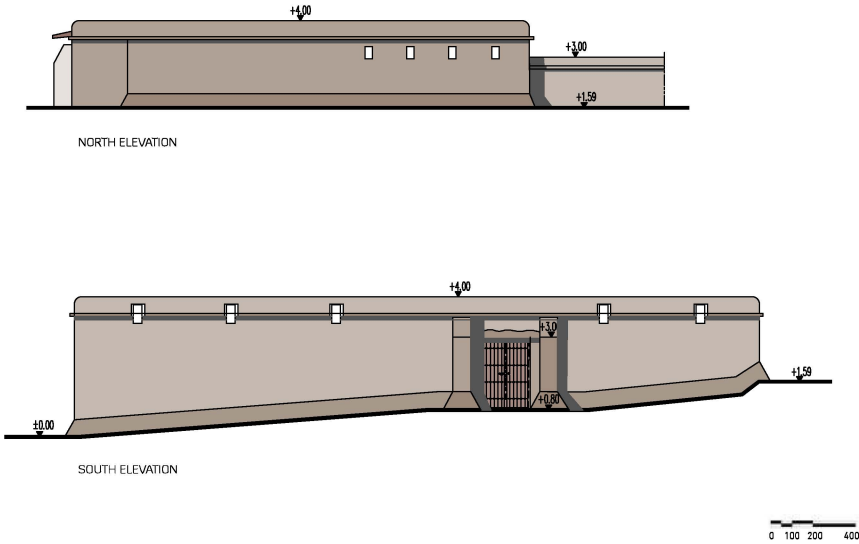
B-2 HATTA FORT

WEST & EAST SIDE ELEVATIONS



B-3 HATTA REST HOUSE

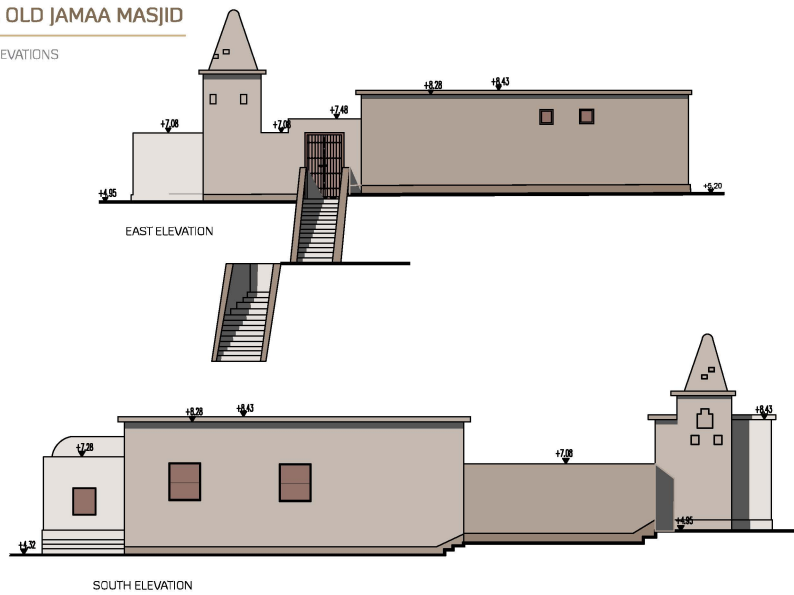
NORTH & SOUTH ELEVATIONS



The main facade of Rest House - Hatta

B-4 HATTA OLD JAMAA MASJID

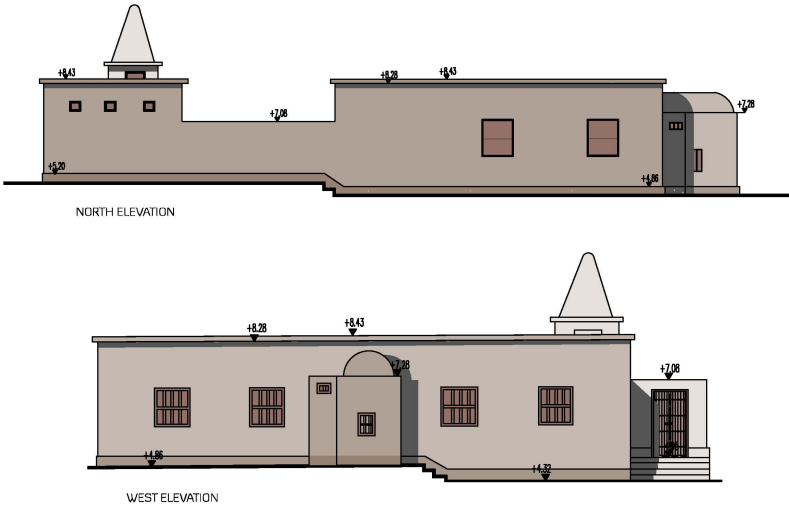
EAST & SOUTH ELEVATIONS

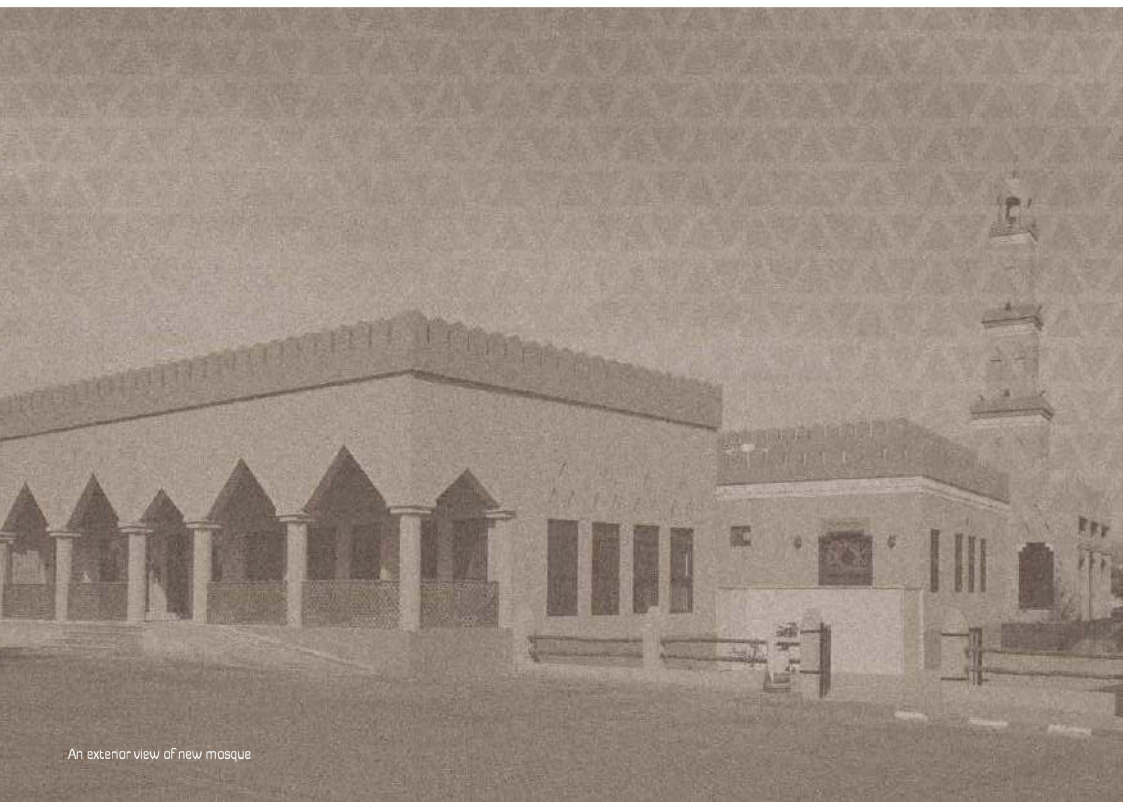


A view from courtyard showing minaret of the old mosque – Hatta.

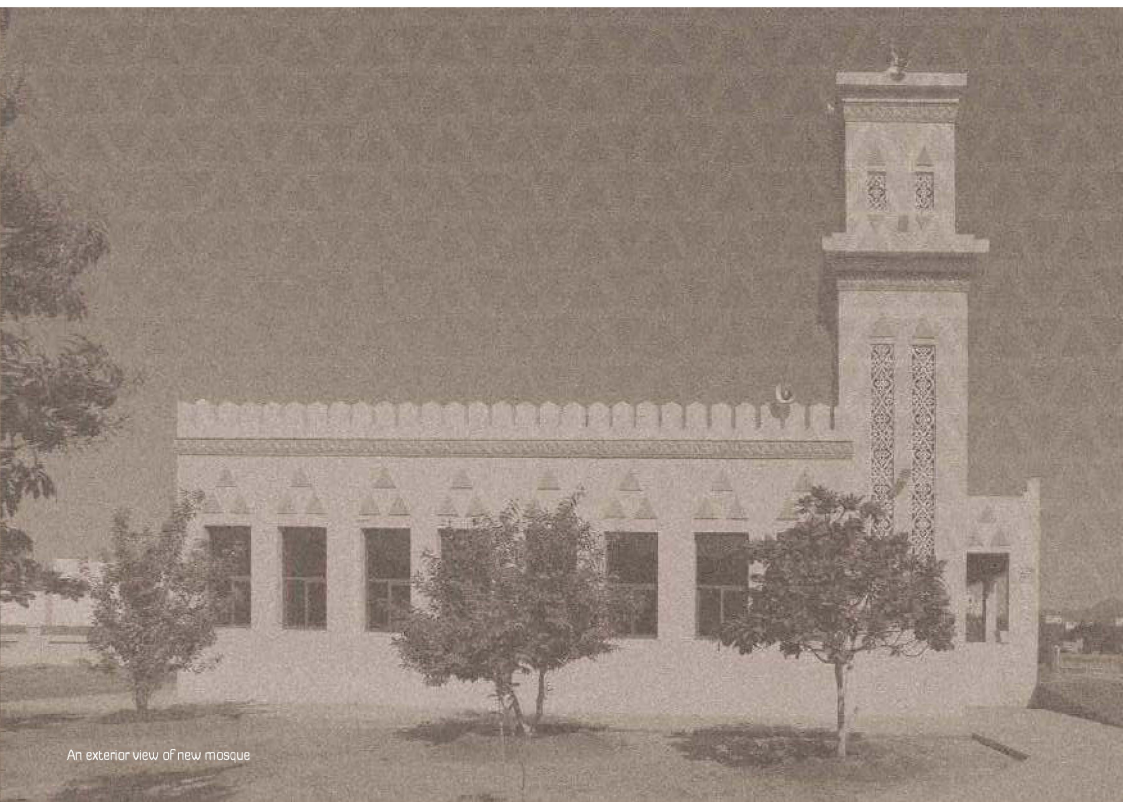
B-5 HATTA OLD JAMAA MASJID

NORTH & WEST SIDE ELEVATIONS





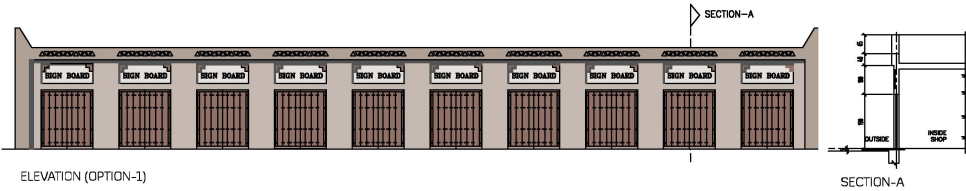
An exterior view of new mosque



An exterior view of new mosque

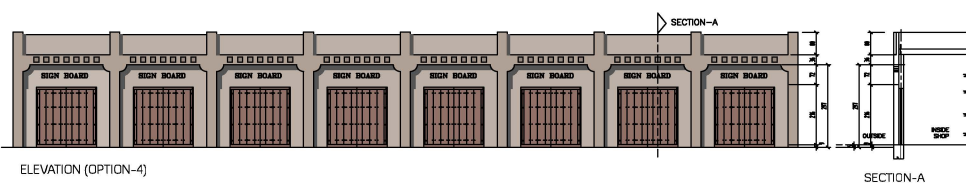
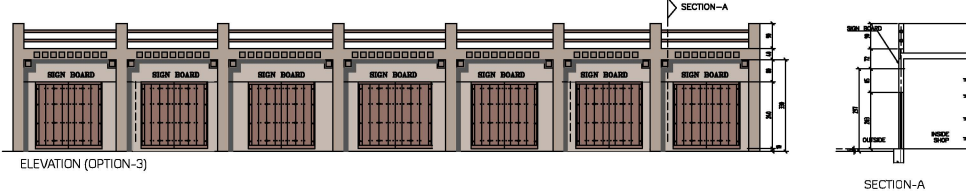
B-6 HATTA SHOP ELEVATION & SECTION

ELEVATION (OPTION-1&2)



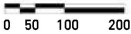
B-7 HATTA SHOP ELEVATION & SECTION

ELEVATION (OPTION-3&4)



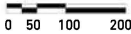
B-8 HATTA SHOP ELEVATION & SECTION

ELEVATION (OPTION-5)



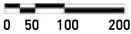
B-9 HATTA SHOP ELEVATION & SECTION

ELEVATION (OPTION-6)



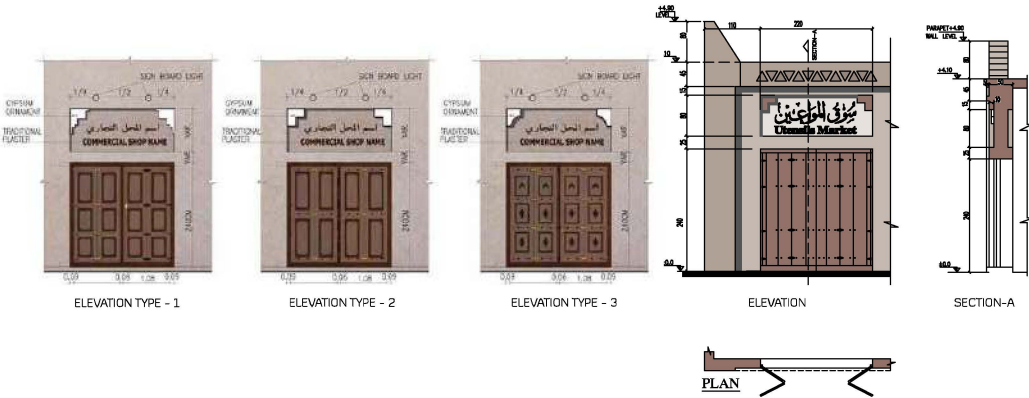
B-10 HATTA SHOP ELEVATION & SECTION

ELEVATION (OPTION-7)



B-11 HATTA SHOP ELEVATION & SECTION

ELEVATION DETAIL



SECTIONS		
		Page No.
▪ C-1	Hatta Fort Section A-A	51
▪ C-2	Hatta Fort Section B-B	52
▪ C-3	Hatta Fort Section C-C	54
▪ C-4	Hatta Fort Section D-D	55
▪ C-5	Hatta Wali House Sections A-A & B-B	56
▪ C-6	Hatta Wali House Sections C-C & D-D	58
▪ C-7	Hatta Old Jamaa Masjid Sections A-A & B-B	59
▪ C-8	Hatta Rest House Sections A-A & B-B	60
▪ C-9	Hatta Rest House Sections C-C & D-D & E-E	62





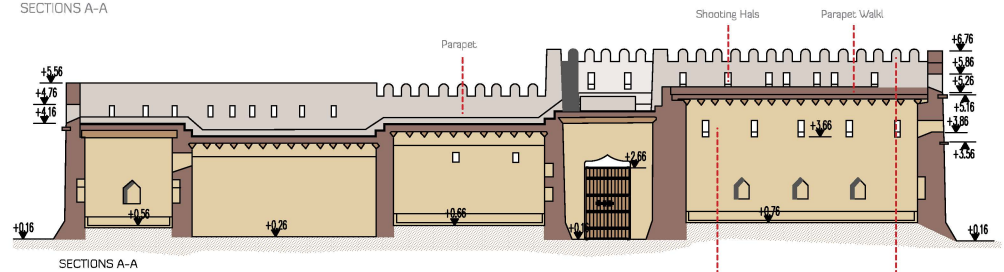
Sections

The nature of the building materials and the inherited customs and traditions had greatly influenced the internal elevations. Moreover, most of the internal walls contain rectangular shaped openings, repetitively and uniformly with a fixed harmony of decoration on their corners.

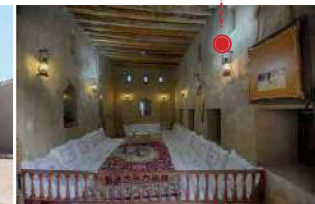
A view from courtyard showing solid & void along the inward looking facade. - Hatza Fort.

C-1 HATTA FORT SECTIONS

SECTIONS A-A



An exterior view of Hatza Fort.



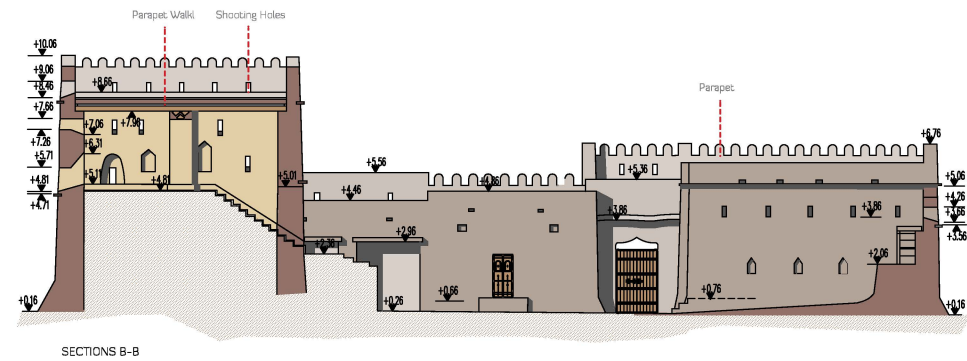
An interior view of Hatza Fort.



0 100 200 400

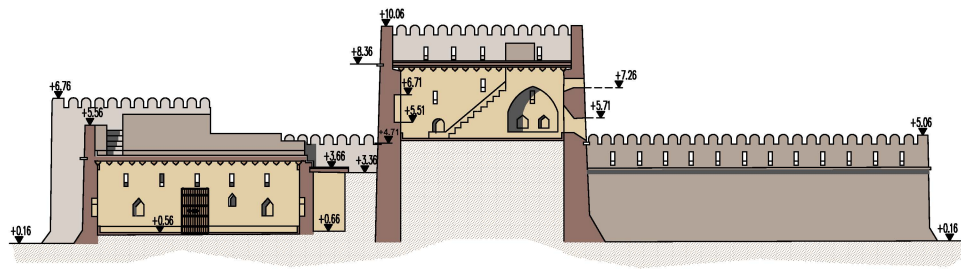
C-2 HATTA FORT SECTIONS

SECTIONS B-B



C-3 HATTA FORT SECTIONS

SECTIONS C-C

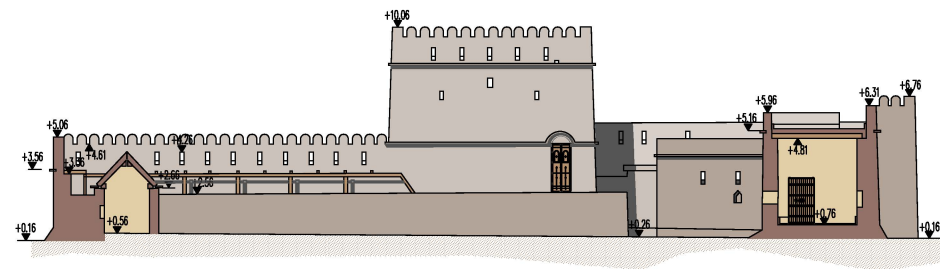


SECTIONS C-C



C-4 HATTA FORT SECTIONS

SECTIONS D-D

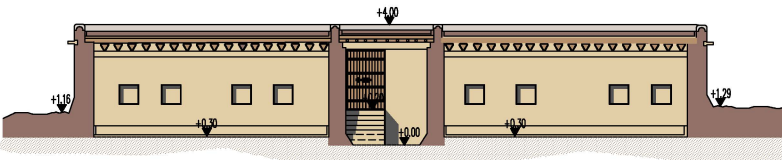


SECTIONS D-D

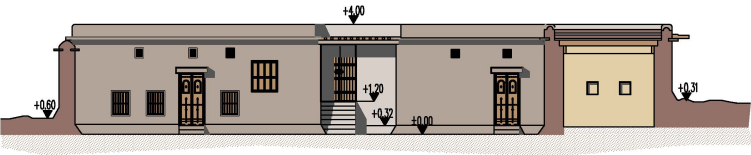


C-5 HATTA WALI HOUSE SECTIONS

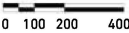
SECTIONS A-A & B-B



SECTIONS A-A



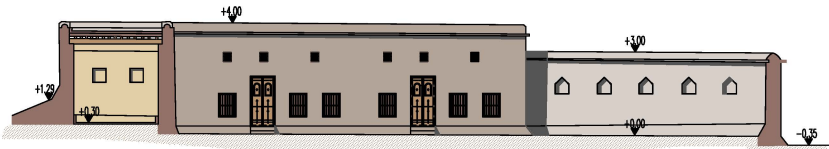
SECTIONS B-B



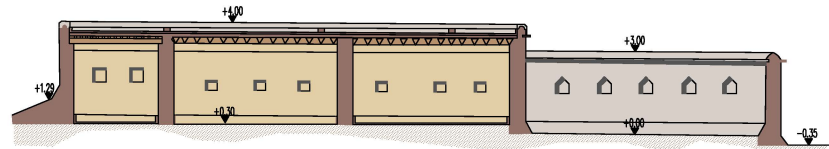
An interior view of Hattawali Fort.

C-6 HATTA WALI HOUSE SECTIONS

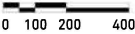
SECTIONS C-C & D-D



SECTIONS C-C

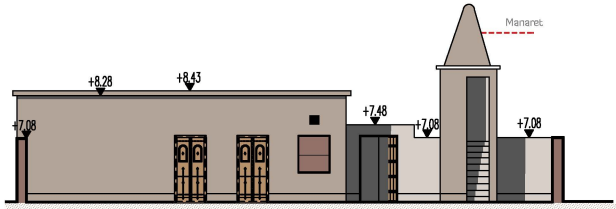


SECTIONS D-D

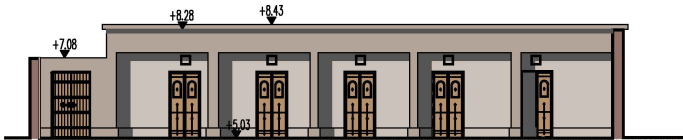


C-7 HATTA OLD JUMA MASJID SECTIONS

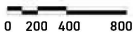
SECTIONS A-A & B-B



SECTIONS A-A



SECTIONS B-B



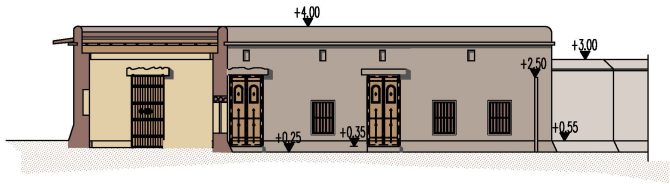
A view of the Manaret -Old Mosque Hatta.



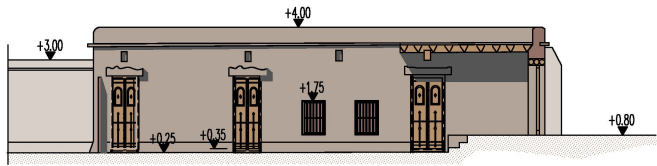
A view of the Liwan -Old Mosque Hatta.

C-8 HATTA REST HOUSE SECTIONS

SECTIONS A-A & B-B



SECTIONS A-A



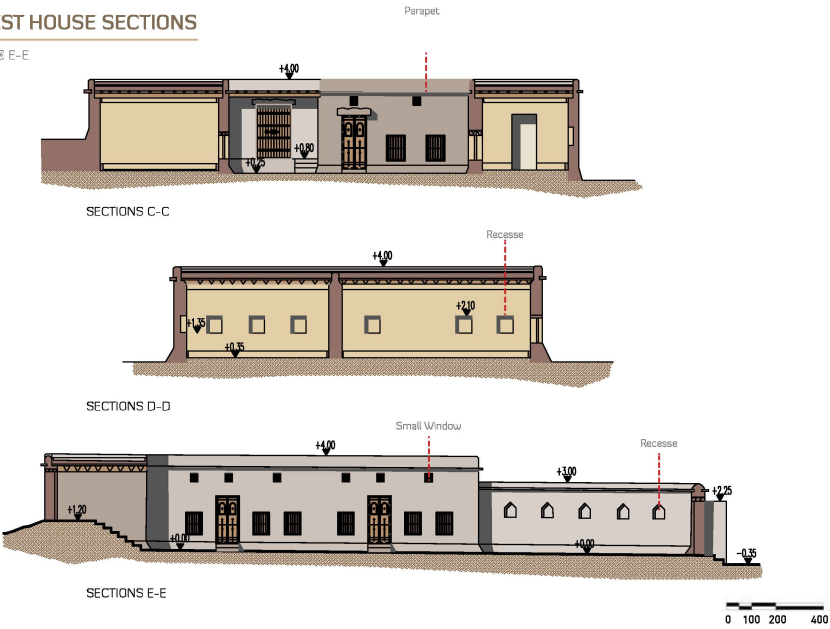
SECTIONS B-B



A view of the interior courtyard - Rest House.

C-9 HATTA REST HOUSE SECTIONS

SECTIONS C-C & D-D & E-E

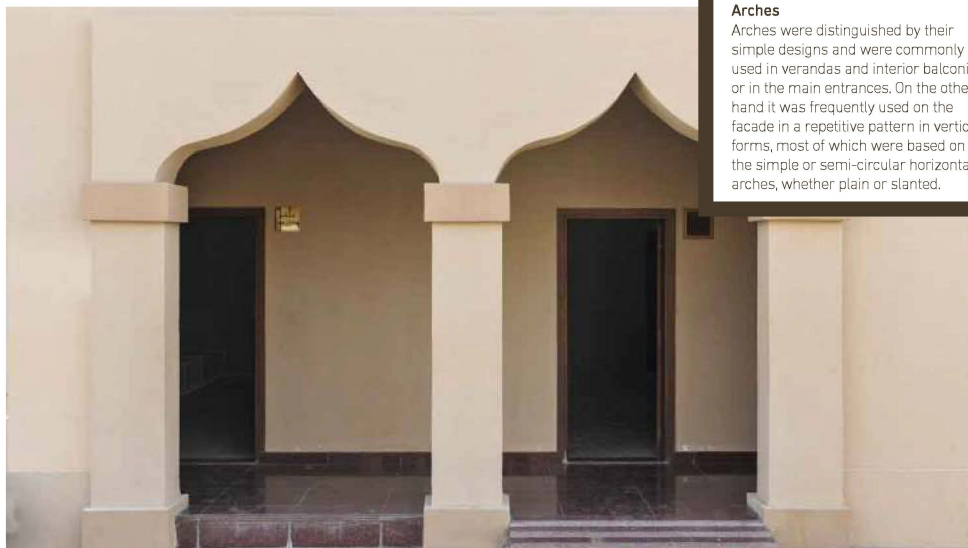


A view of the interior courtyard - Rest House.

ARCHES

	Page No.
• D-1 Hatta Village - Main Entrance Arch	67
• D-2 Hatta Village - Main Entrance Arch	68
• D-3 Hatta Village - Arch	69
• D-4 Hatta Village - Flat Arch Type - 1	70
• D-5 Hatta Village - Flat Arch Type - 2	71
• D-6 Hatta Village - Flat Arch With Recess Type - 3	72
• D-7 Hatta Village - Flat Arch Type - 4	73
• D-8 Hatta Village - Corner Ornament Arch	76
• D-9 Hatta Village - Corner Ornament Arch	78
• D-10 Hatta Village - Corner Ornament Arch	79
• D-11 Hatta Village - Corner Circle Arch	80
• D-12 Hatta Village - Corner Circle Arch With Void Ornaments	81
• D-13 Hatta Village - Triangular (Primitive) Arch Type - 1	82
• D-14 Hatta Village - Triangular (Primitive) Arch Type - 2	83



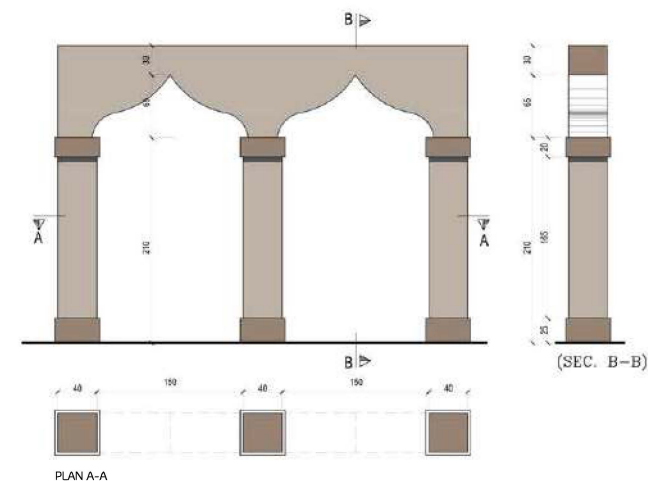


Arches
 Arches were distinguished by their simple designs and were commonly used in verandas and interior balconies or in the main entrances. On the other hand it was frequently used on the facade in a repetitive pattern in vertical forms, most of which were based on the simple or semi-circular horizontal arches, whether plain or slanted.

A view of a liwan with flat arch.

D-1 HATTA VILLAGE - MAIN ENTRANCE ARCH

(PLAN A-A) - (SECTION B-B)

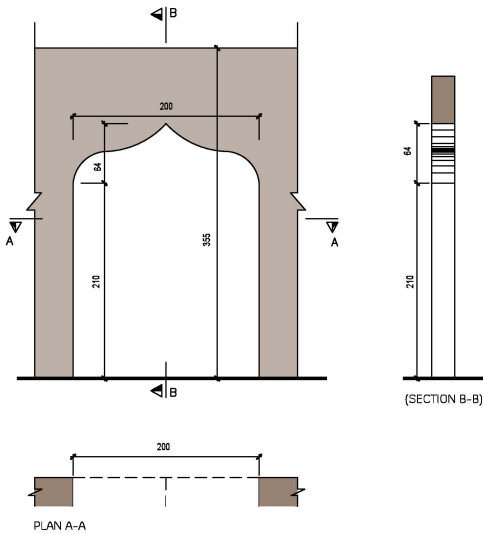


D-2 HATTA VILLAGE - MAIN ENTRANCE ARCH

(PLAN A-A) - (SECTION B-B)

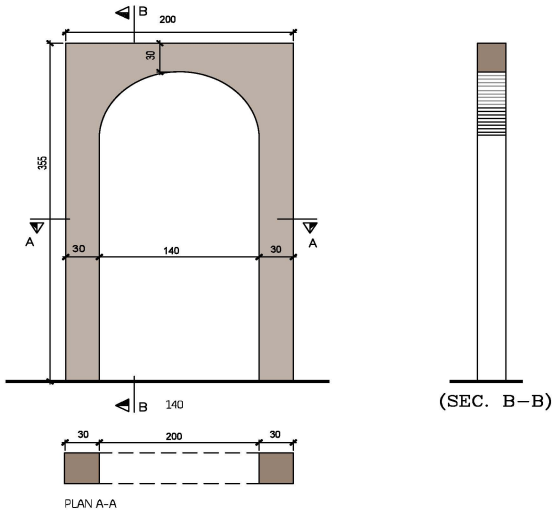


Main entrance arch use the tapered nodes at the entrance.



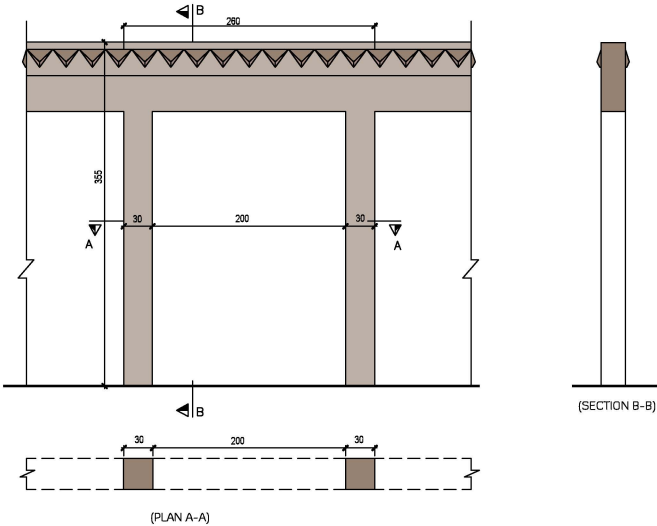
D-3 HATTA VILLAGE - ARCH

(PLAN A-A) - (SECTION B-B)



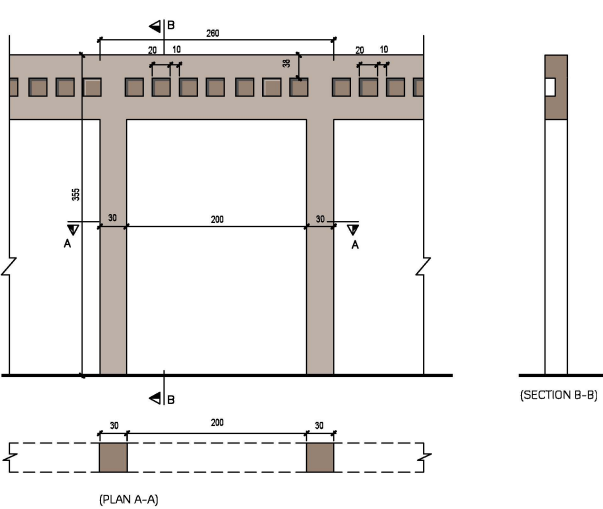
D-4 HATTA VILLAGE - FLAT ARCH TYPE - 1

(PLAN A-A) - (SECTION B-B)



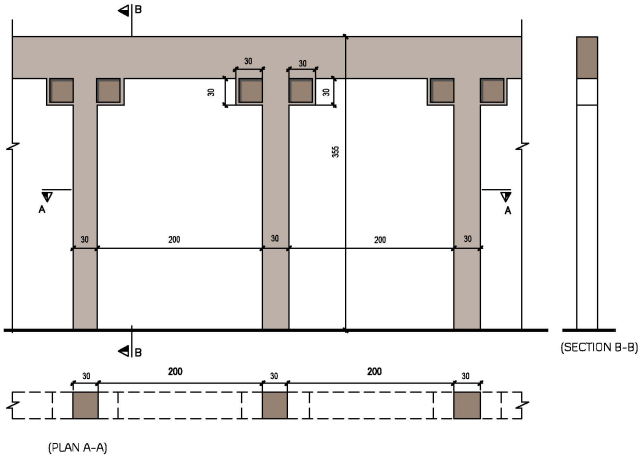
D-5 HATTA VILLAGE - FLAT ARCH TYPE - 2

(PLAN A-A) - (SECTION B-B)



D-6 HATTA VILLAGE - FLAT ARCH WITH RECESS TYPE - 3

(PLAN A-A) - (SECTION B-B)

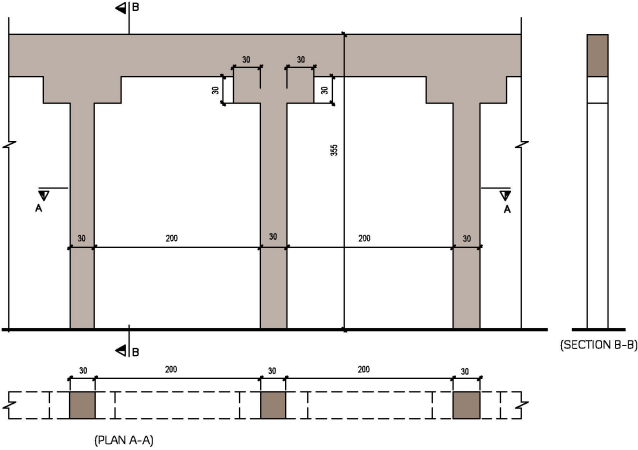


D-7 HATTA VILLAGE - FLAT ARCH TYPE - 4

(PLAN A-A) - (SECTION B-B)



A view of a liwan with flat arch.





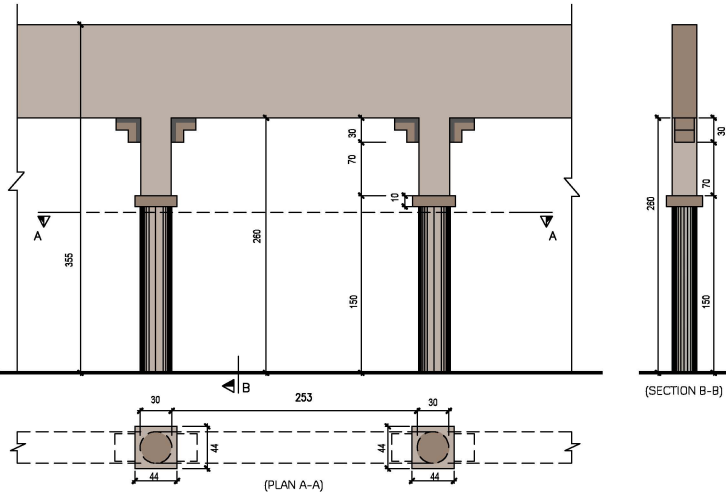
A view of the Interior courtyard - Flat Arch



A view of the Interior courtyard - Flat Arch

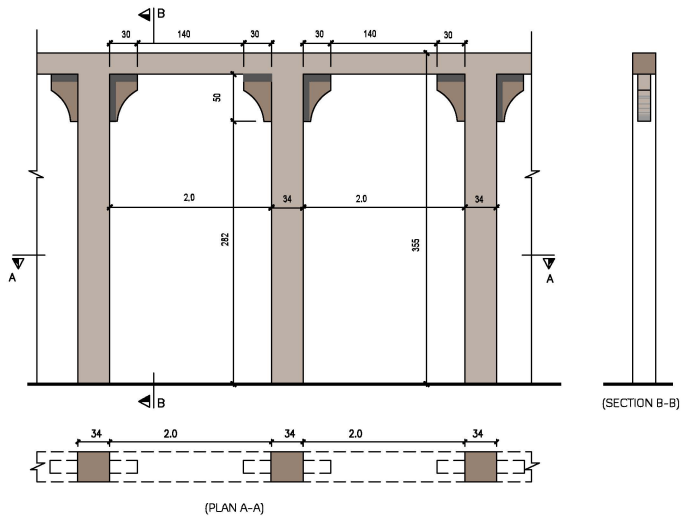
D-8 HATTA VILLAGE - CORNER ORNAMENT ARCH

(PLAN A-A) - (SECTION B-B)



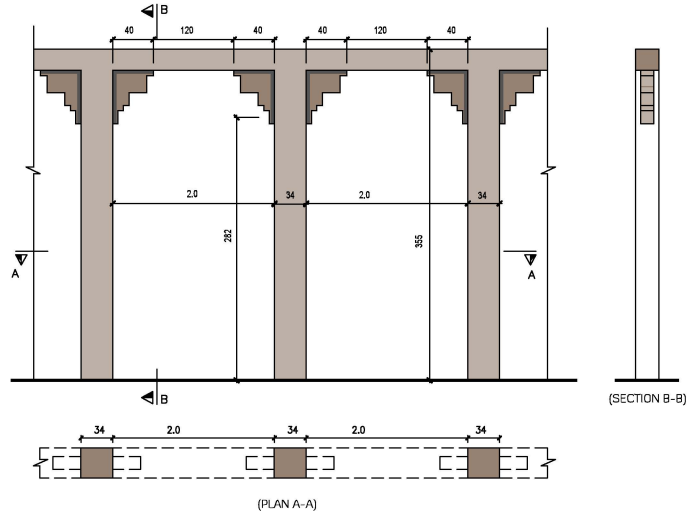
D-9 HATTA VILLAGE - CORNER ORNAMENT ARCH

(PLAN A-A) - (SECTION B-B)



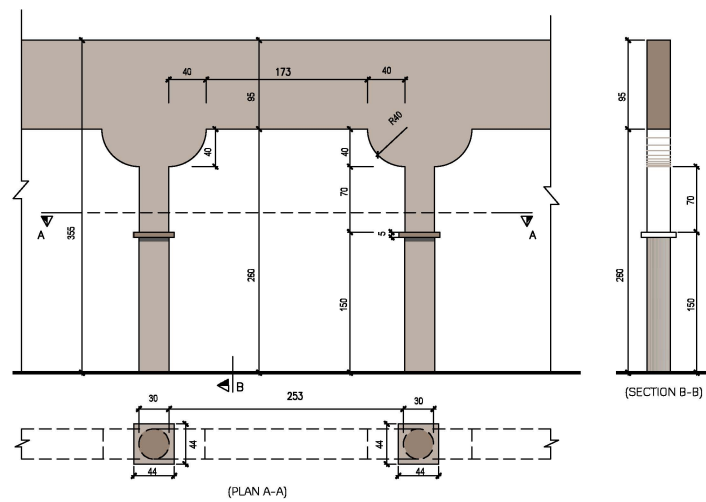
D-10 HATTA VILLAGE - CORNER ORNAMENT ARCH

(PLAN A-A) - (SECTION B-B)



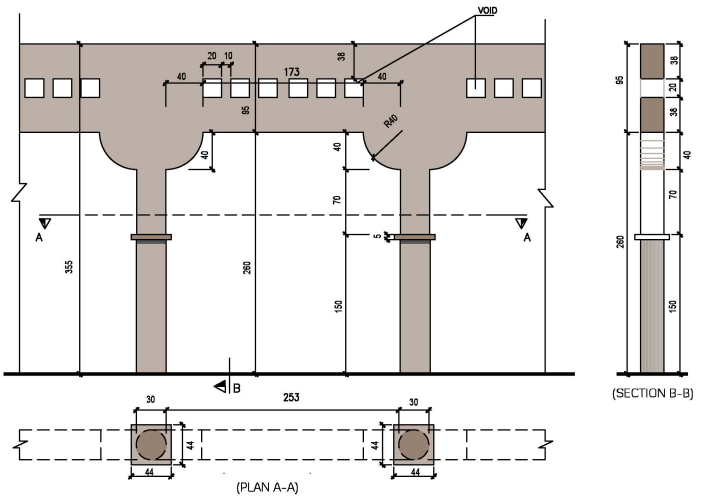
D-11 HATTA VILLAGE - CORNER CIRCLE ARCH

(PLAN A-A) - (SECTION B-B)



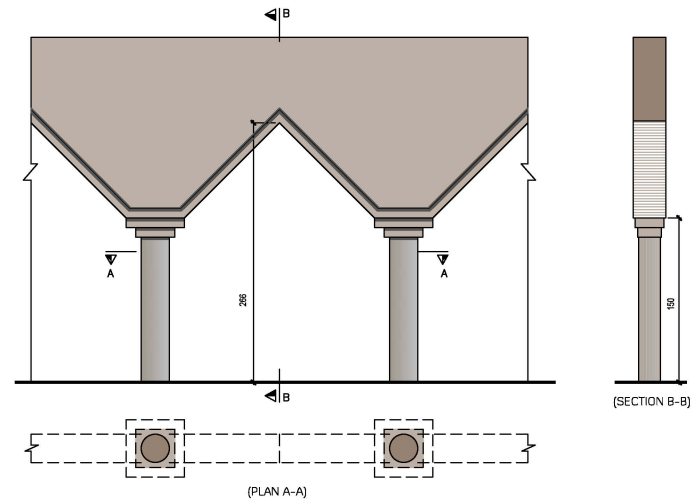
D-12 HATTA VILLAGE - CORNER CIRCLE ARCH WITH VOID ORNAMENTS

(PLAN A-A) - (SECTION B-B)



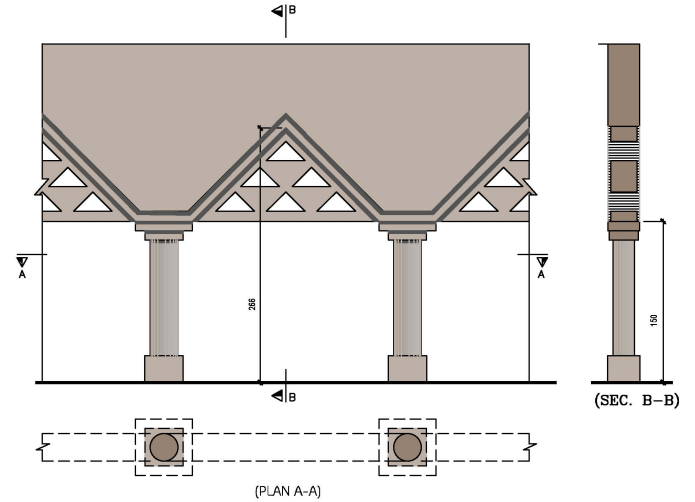
D-13 HATTA VILLAGE - TRIANGULAR (PRIMITIVE) ARCH TYPE - 1

(PLAN A-A) - (SECTION B-B)



D-14 HATTA VILLAGE - TRIANGULAR (PRIMITIVE) ARCH TYPE - 2

(PLAN A-A) - (SECTION B-B)



COLUMNS

- E-1 Hatta Village Column Type - 1
- E-2 Hatta Village Column Type - 2
- E-3 Hatta Village Column Type - 3
- E-4 Hatta Village Column Type - 4

Page No.

88
89
90
91



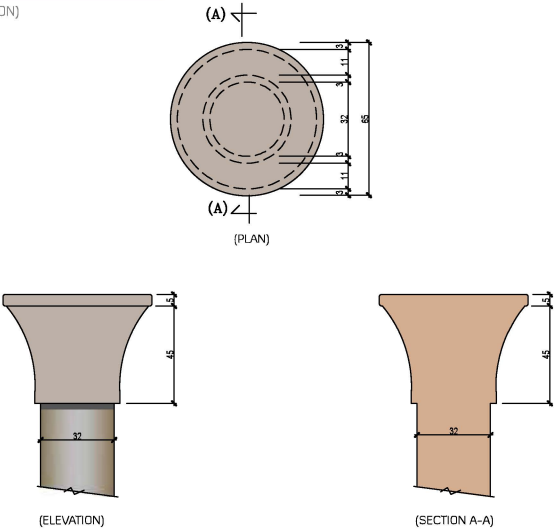
Columns

Columns came in simple forms and varied depending of the type of ceiling used and the building materials that were available with no ornaments or base. Columns were usually visualized into two parts, "body and crown" and without base.



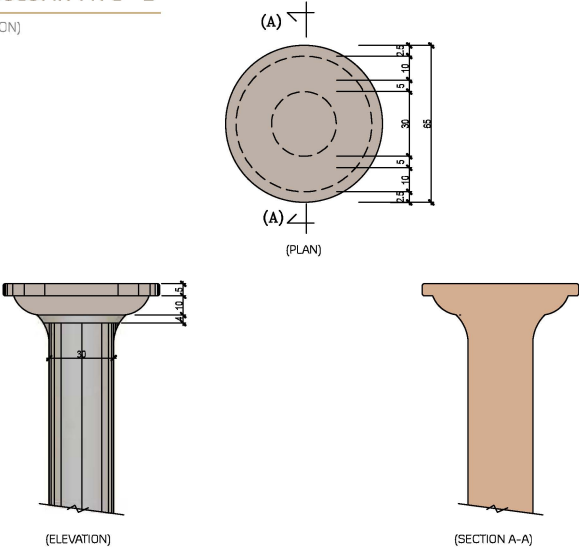
E-1 HATTA VILLAGE COLUMN TYPE - 1

(PLAN) - (SECTION A-A) - (ELEVATION)



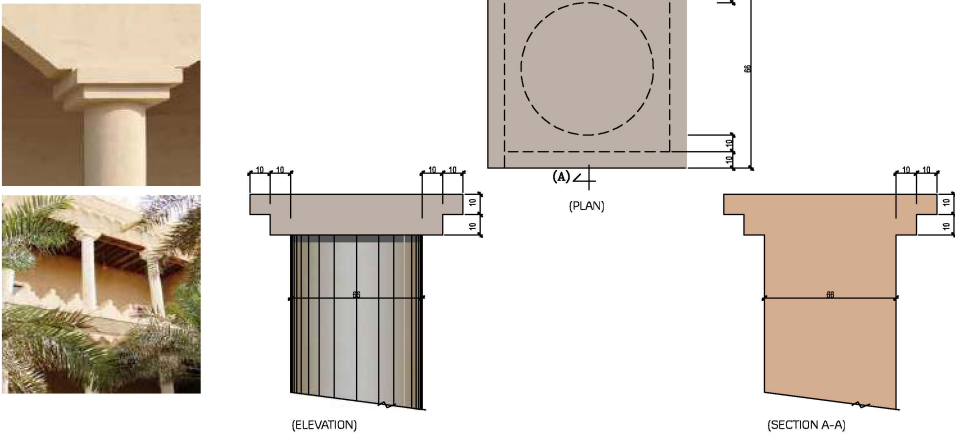
E-2 HATTA VILLAGE COLUMN TYPE - 2

(PLAN) - (SECTION A-A) - (ELEVATION)



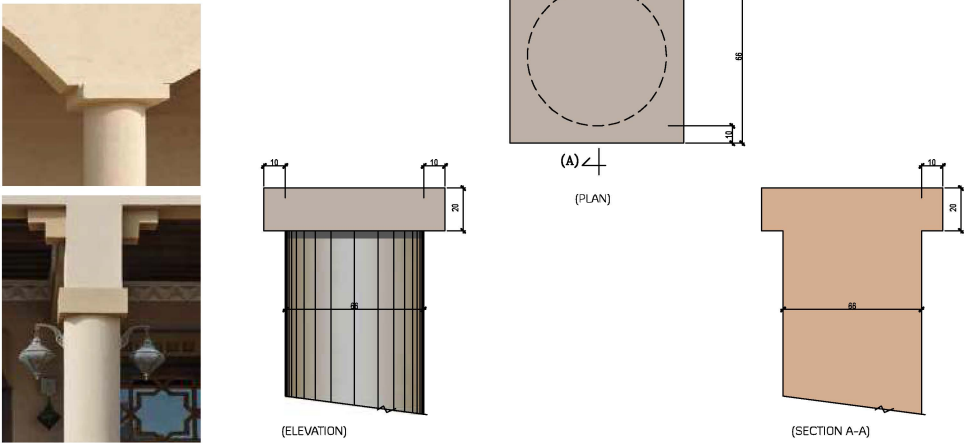
E-3 HATTA VILLAGE COLUMN TYPE - 3

(PLAN) - (SECTION A-A) - (ELEVATION)



E-4 HATTA VILLAGE COLUMN TYPE - 4

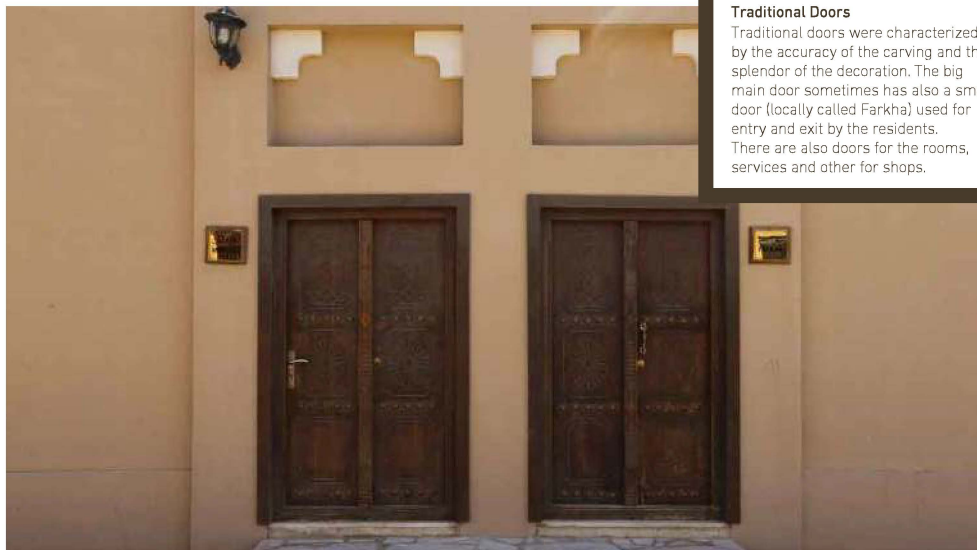
(PLAN) - (SECTION A-A) - (ELEVATION)



DOORS

	Page No.
▪ F-1 Hatta Village Door Type 1	95
▪ F-2 Hatta Village Door Type 2	96
▪ F-3 Hatta Village Door Type 3	97
▪ F-4 Hatta Village Door Type 4	98
▪ F-5 Hatta Village Door Type 5	99
▪ F-6 Hatta Village Door Type 6	100
▪ F-7 Hatta Village Door Type - 7 & 8	101
▪ F-8 Hatta Village Gate Type 1	102
▪ F-9 Hatta Village Gate Type 2	103
▪ F-10 Hatta Village Door Typical Details	104
▪ F-11 Hatta Village Door Typical Details	105
▪ F-12 Hatta Village Door Typical Details	106
▪ F-13 Hatta Village Door Accessories	107



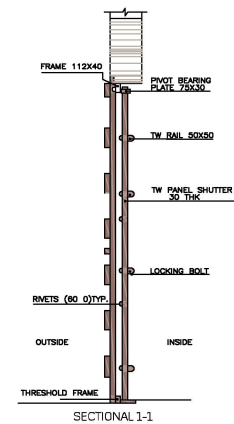
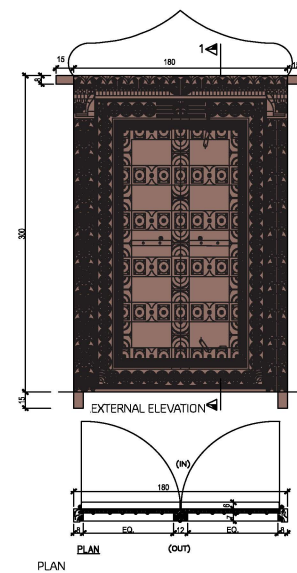


Traditional Doors

Traditional doors were characterized by the accuracy of the carving and the splendor of the decoration. The big main door sometimes has also a small door (locally called Farkha) used for entry and exit by the residents. There are also doors for the rooms, services and other for shops.

F-1 HATTA VILLAGE DOOR TYPE 1

(PLAN) - (SECTIONAL 1-1) - (EXTERNAL ELEVATION)



(PLAN) - (SECTIONAL 1-1) - (EXTERNAL ELEVATION) - (INTERNAL ELEVATION)

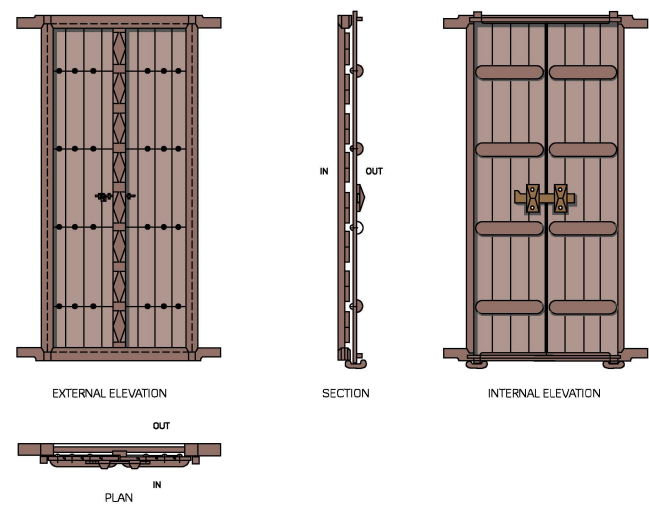


(PLAN) - (EXTERNAL ELEVATION)



F-4 HATTA VILLAGE DOOR TYPE 4

(PLAN) - (SECTION) - (EXTERNAL ELEVATION) - (INTERNAL ELEVATION)



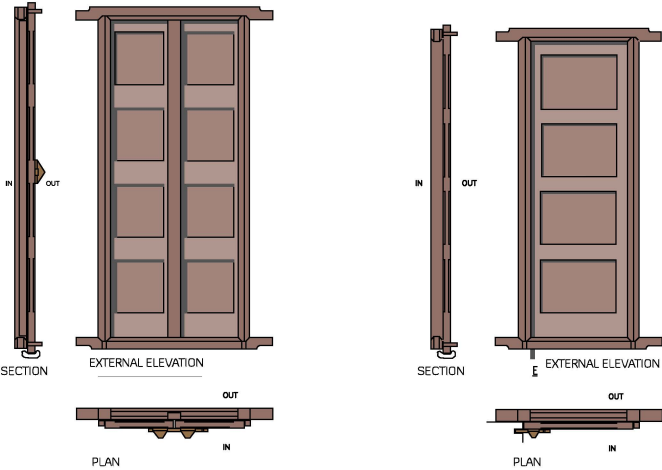
F-5 HATTA VILLAGE DOOR TYPE 5

(PLAN) - (SECTION) - (EXTERNAL ELEVATION) - (INTERNAL ELEVATION)



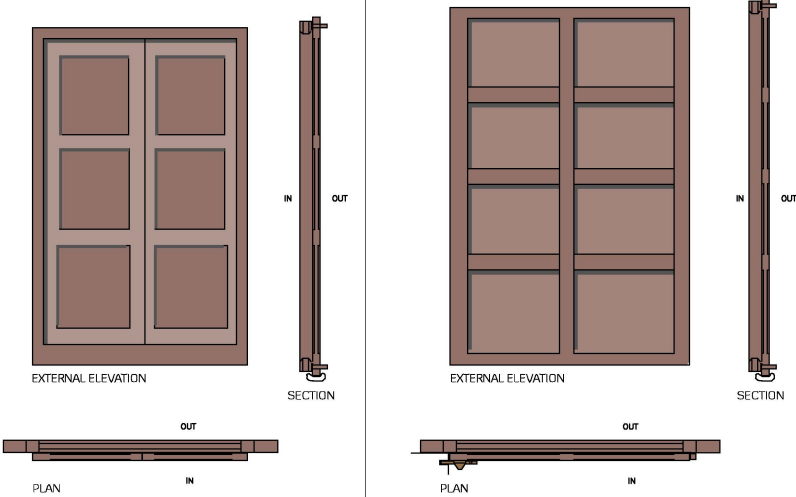
F-6 HATTA VILLAGE DOOR TYPE 6

(PLAN) - (SECTION) - (EXTERNAL ELEVATION)



F-7 HATTA VILLAGE DOOR TYPE 7 & 8

(PLAN) - (SECTION) - (EXTERNAL ELEVATION)



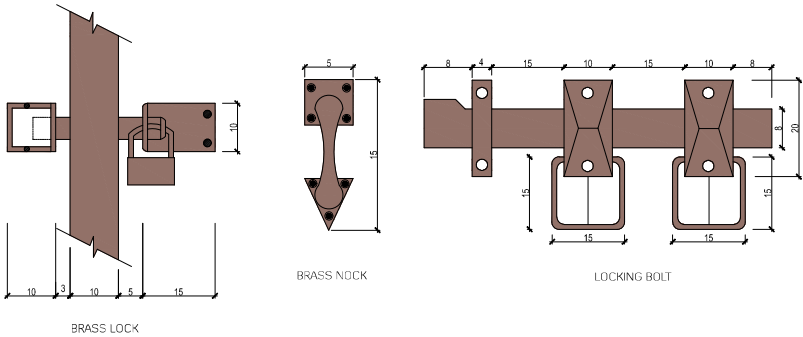
(PLAN) - (EXTERNAL ELEVATION)



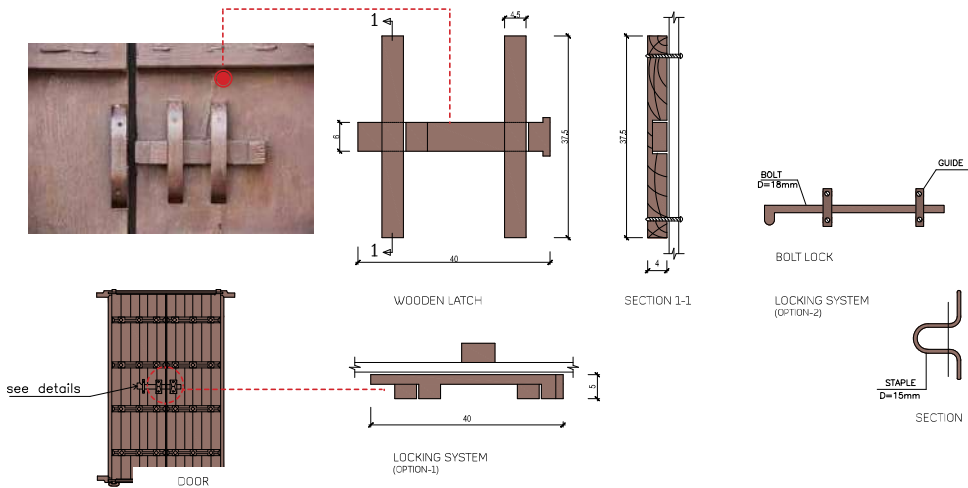
(PLAN) - (EXTERNAL ELEVATION)



LOCKING DETAILS: BRASS LOCK - BRASS KNOCK - LOCKING BOLT

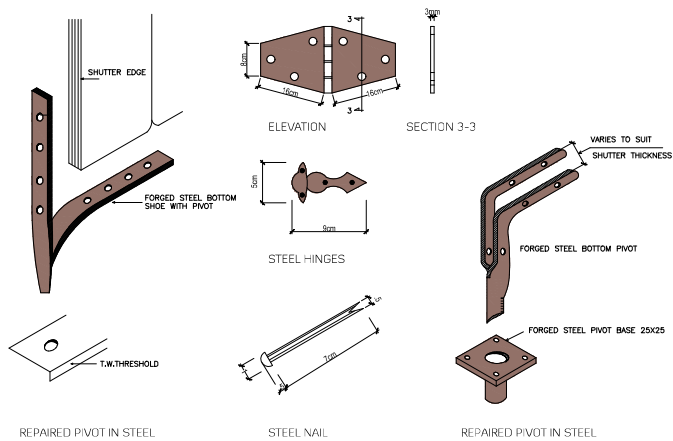


LOCKING DETAILS: WOODEN LATCH - SECTION 1-1 - LOCKING SYSTEM



F-12 HATTA VILLAGE DOOR TYPICAL DETAILS

LOCKING DETAILS: BRASS LOCK - BRASS KNOCK - LOCKING BOLT



F-13 HATTA VILLAGE DOOR ACCESSORIES





WINDOWS

• G-1	Hatta Village Window Type 1	111
• G-2	Hatta Village Window Type 2	112
• G-3	Hatta Village Window Type 3	113
• G-4	Hatta Village Window Type 4	114
• G-5	Hatta Village Window Type 5	115
• G-6	Hatta Village Window Type 6	116

(PLAN) - (SECTION A-A) - (EXTERNAL ELEVATION) - (INTERNAL ELEVATION)

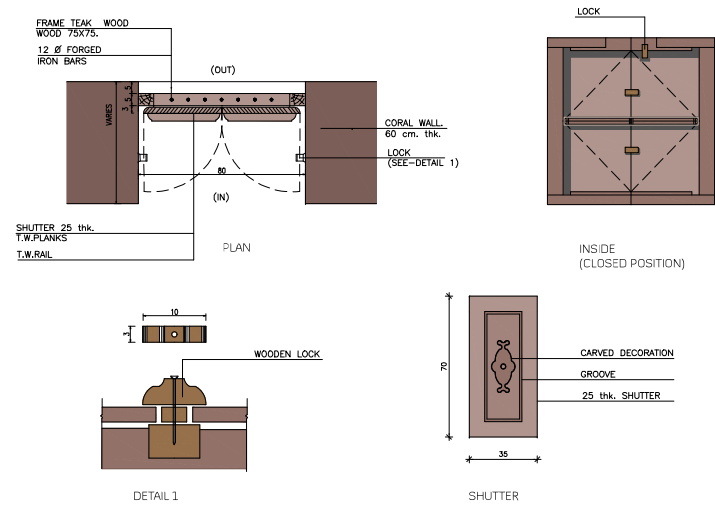


(SECTION A-A) - (SECTION B-B) - (EXTERNAL ELEVATION)



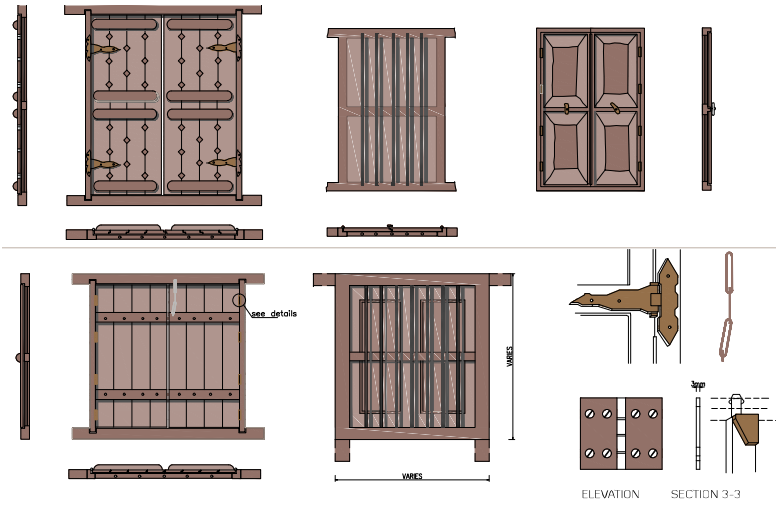
G-5 HATTA VILLAGE WINDOW TYPE 4

(PLAN) - (DETAIL 1) - (INSIDE) - (SHUTTER)



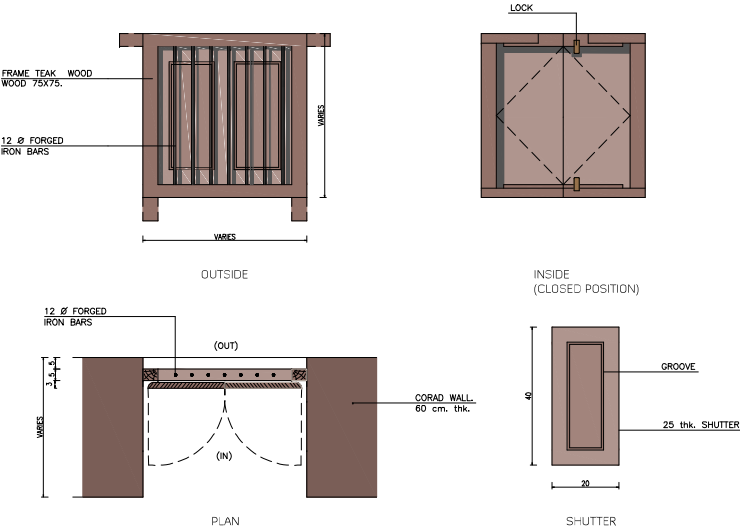
G-6 HATTA VILLAGE WINDOW TYPE 5

(ELEVATION) - (SECTION 3-3)



G-4 HATTA VILLAGE WINDOW TYPE 6

(PLAN) - (OUTSIDE) - (INSIDE) - (SHUTTER)

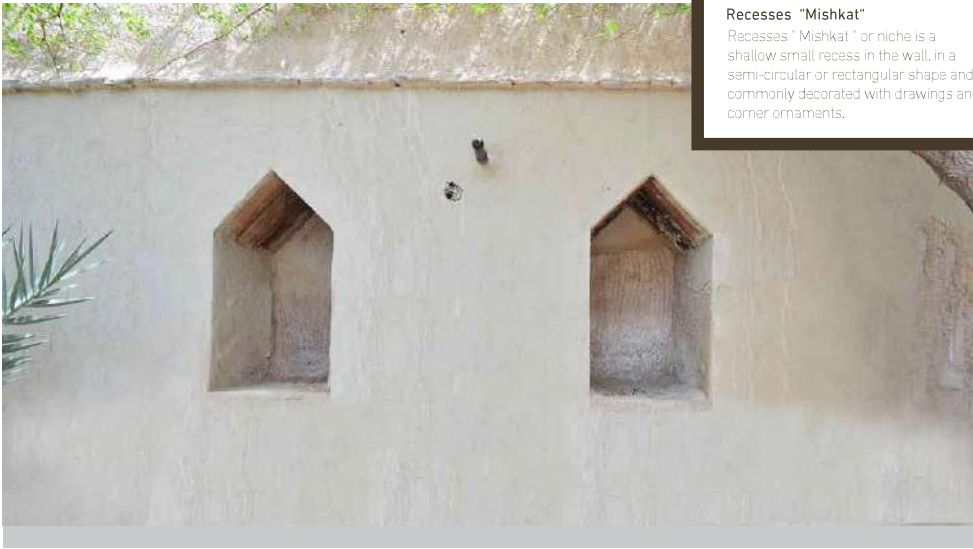


RECESSES

• H-1	Hatta Recess Type - 1	121
• H-2	Hatta Recess Type - 2, 3 & 4	124
• H-3	Hatta Recess Type - 5 & 6	125
• H-4	Hatta Recess Type - 7 & 8	126
• H-5	Hatta Recess Type - 9, 10 & 11	128

Page No.



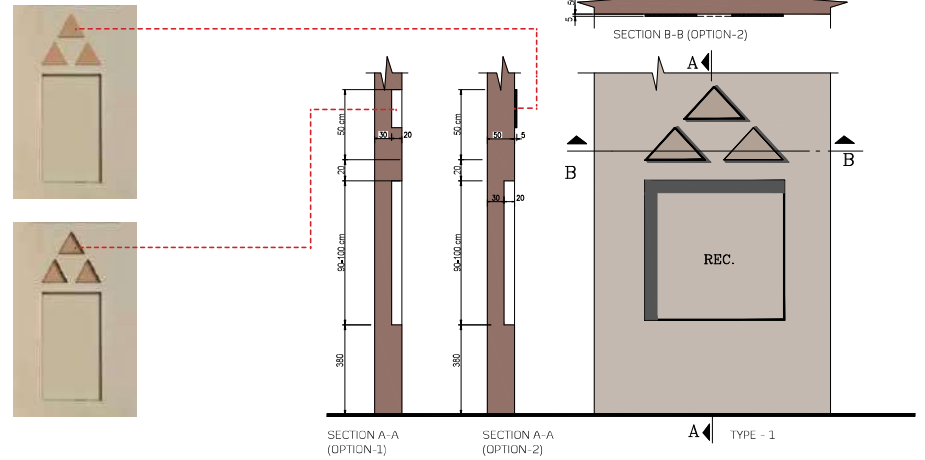


Recesses "Mishkat"

Recesses "Mishkat" or niche is a shallow small recess in the wall, in a semi-circular or rectangular shape and commonly decorated with drawings and corner ornaments.

H-1 HATTA RECESS TYPE 1

SECTION A-A (option-1) - SECTION A-A (option-2)
SECTION B-B (option-1) - SECTION B-B (option-2)





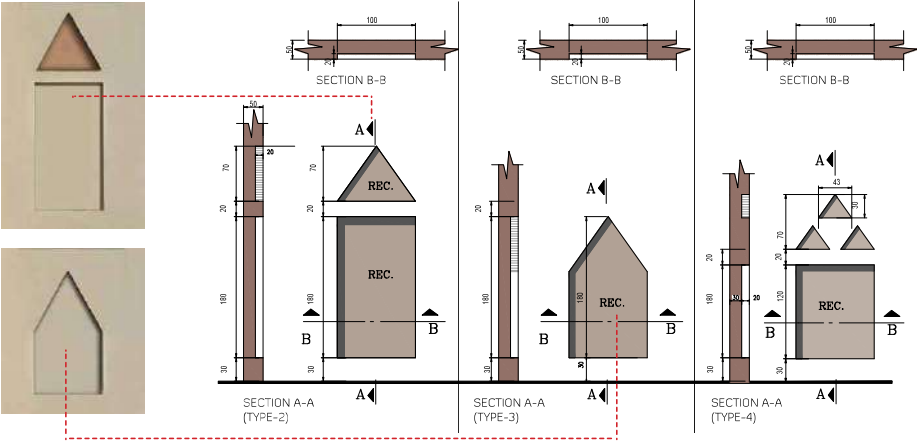
An interior view of Hatta Majlis.



An external view of Hatta Majlis.

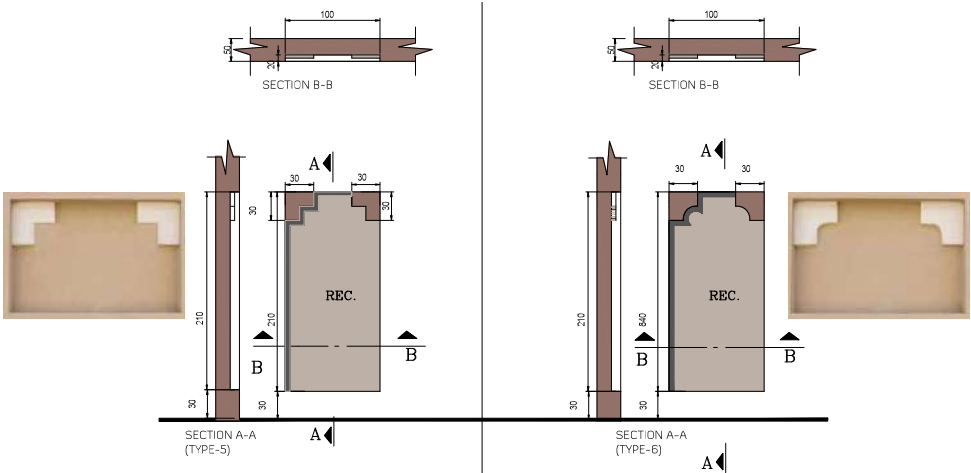
H-2 HATTA RECESS TYPE 2, 3 & 4

SECTION A-A (TYPE 2) - SECTION A-A (TYPE 3) -
SECTION A-A (TYPE 4) - SECTION B-B



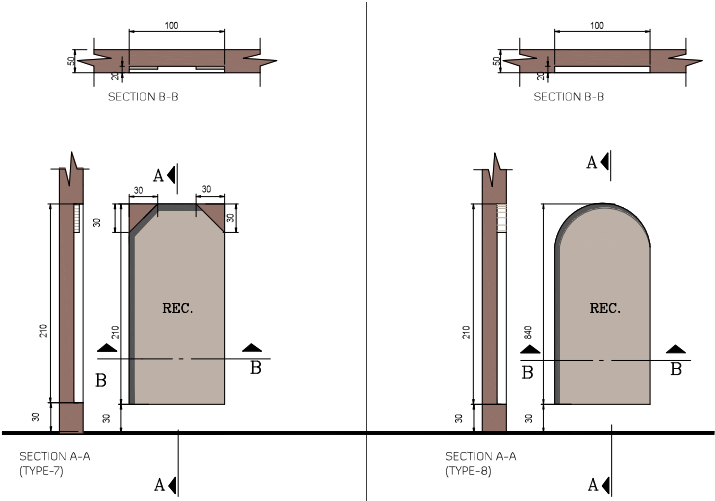
H-3 HATTA RECESS TYPE 5 & 6

SECTION A-A (TYPE 5) - SECTION A-A (TYPE 6) -
SECTION B-B



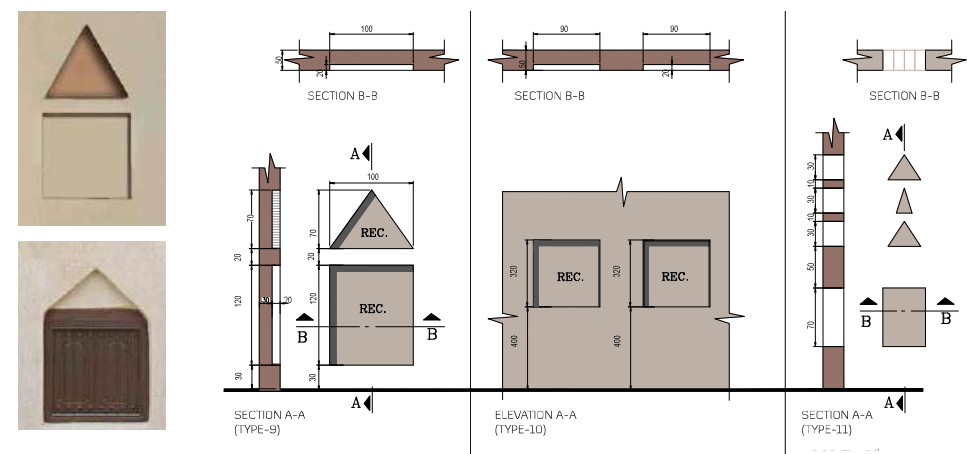
H-4 HATTA RECESS TYPE 7 & 8

SECTION A-A (TYPE 7) - SECTION A-A (TYPE 8) -
SECTION B-B



H-5 HATTA RECESS TYPE 9, 10 & 11

SECTION A-A (TYPE 9) - ELEVATION (TYPE 10) - SECTION
A-A (TYPE 11) SECTION B-B





An interior view showing recess along the inward looking facade



An interior view showing recess along the Heritage Village

PARAPETS

	Page No.
• I-1 Hatta Parapets Wall Type-1 & Type-2	135
• I-2 Hatta Parapets Wall Type-3 ,Type-4 & Type 5	136
• I-3 Hatta Parapets Wall Type-6 & Type-7	138
• I-4 Hatta Parapets Wall Type-8 & Type-9	139
• I-5 Hatta Parapets Wall Type-10 & Type-11	140
• I-6 Hatta Parapets Wall Type-12 & Type-13 & Type-14	142
• I-7 Hatta Parapets Wall Type-15 & Type-16 & Type-17	143



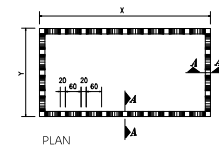


Parapet

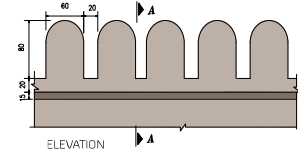
The Parapet is a recurring architectural element that encapsulates the highest level of the building to form the skyline. It takes a stylized or hollow shape that gives the impression of the visual comfort and the overlap of shade, light and blue-sky color. Parapets are also used as a barrier, and are made of various building material such as wood or metal depending on the builders' skills. Its height is not less than 45-90 cm.

I-1 HATTA PARAPETS WALL TYPE-1 & TYPE-2

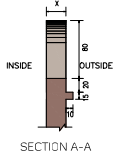
(PLAN TYPE-7) - (PLAN TYPE-8) - (ELEVATION) - (SECTION A-A)



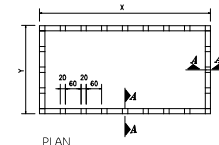
PLAN
(TYPE-1)



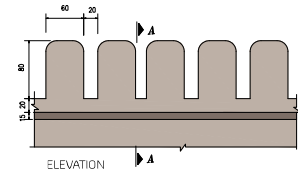
ELEVATION



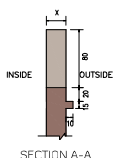
SECTION A-A



PLAN
(TYPE-2)



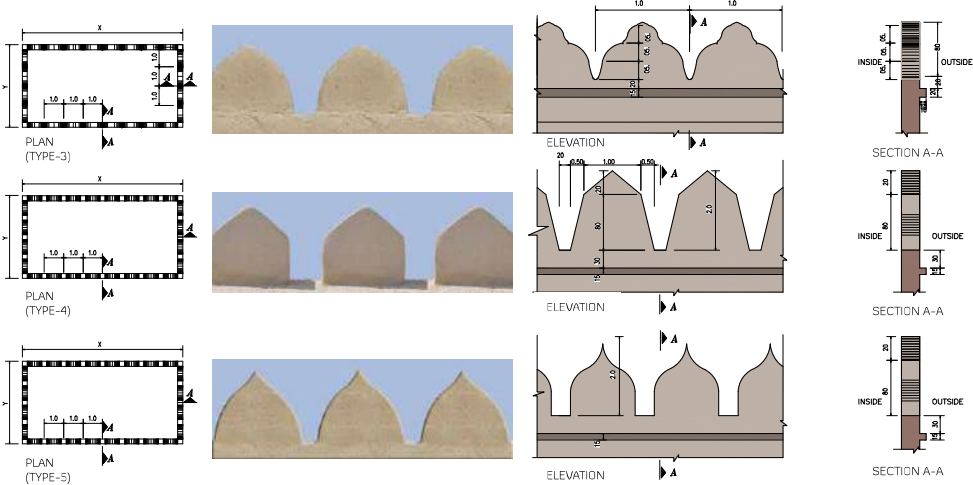
ELEVATION



SECTION A-A

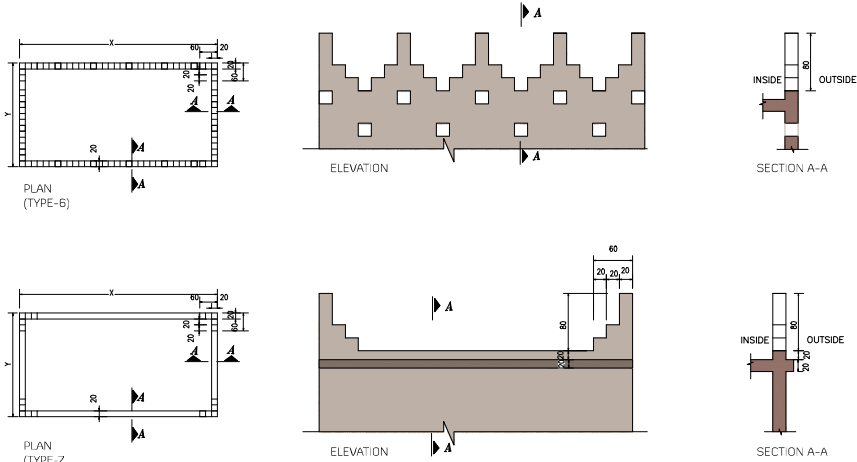
I-2 HATTA PARAPETS WALL TYPE-3, TYPE-4 & TYPE-5

(PLAN TYPE-9) - (PLAN TYPE-10) - (PLAN TYPE-11) - (ELEVATION) - (SECTION A-A)



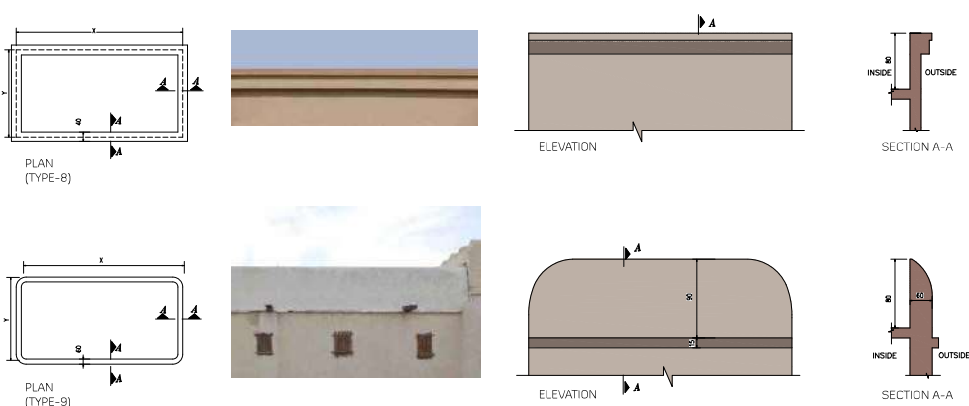
I-3 HATTA PARAPETS WALL TYPE-6 & TYPE-7

(PLAN TYPE-3) - (PLAN TYPE-4) - (ELEVATION) - (SECTION A-A)



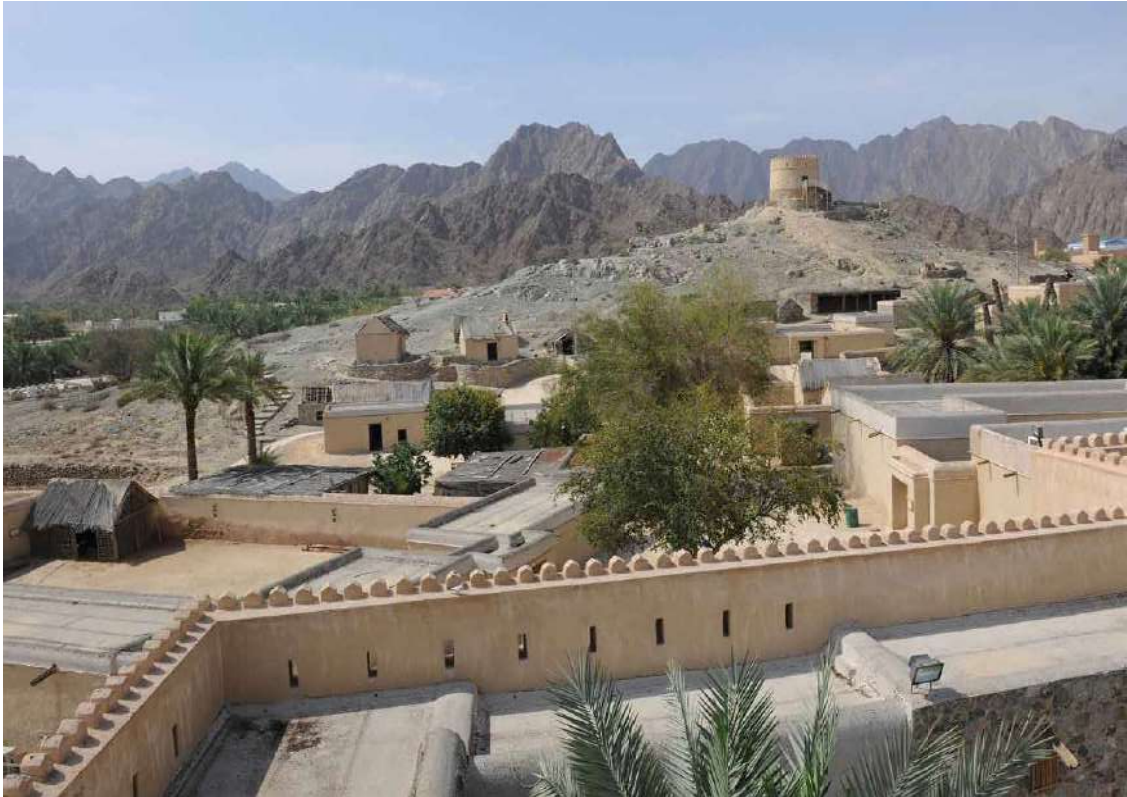
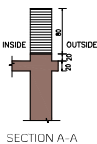
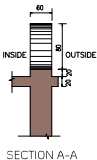
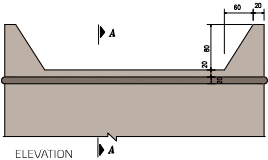
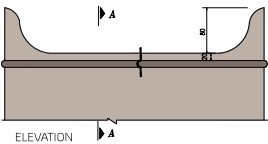
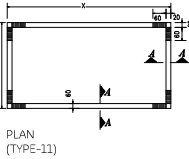
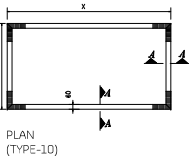
I-4 HATTA PARAPETS WALL TYPE-8 & TYPE-9

(PLAN TYPE-5) - (PLAN TYPE-6) - (ELEVATION) - (SECTION A-A)



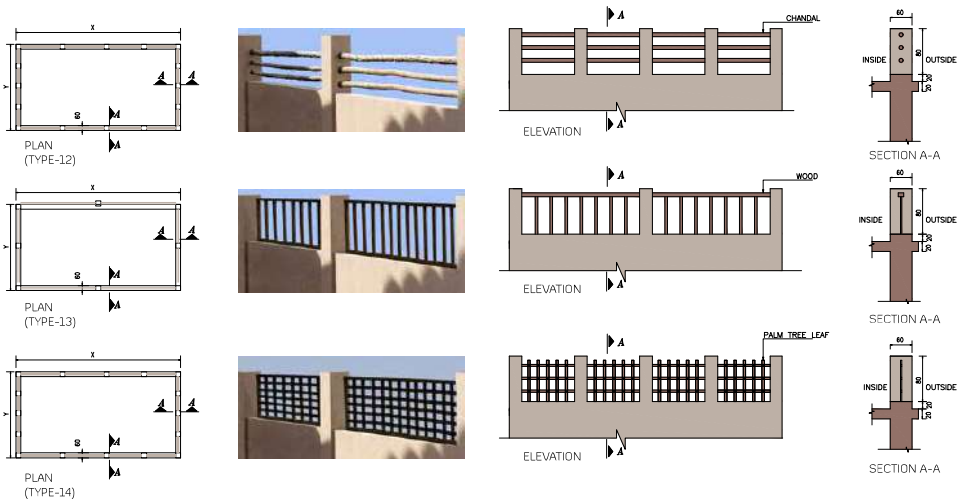
I-5 HATTA PARAPETS WALL TYPE-10 & TYPE-11

(PLAN TYPE-1) - (PLAN TYPE-2) - (ELEVATION) - (SECTION A-A)



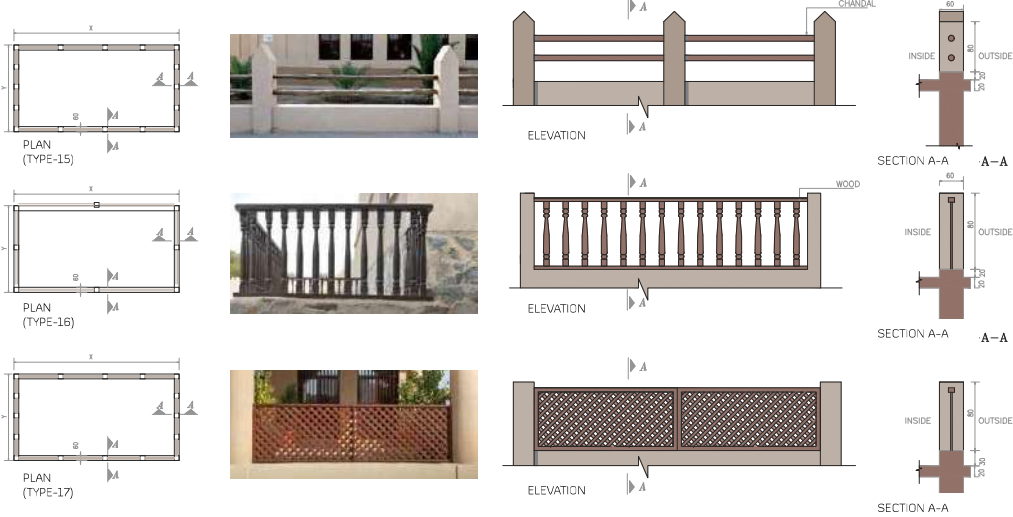
I-6 HATTA PARAPETS WALL TYPE-12, TYPE-13 & TYPE-14

(PLAN TYPE-12) - (PLAN TYPE-13) - (PLAN TYPE-14) - (ELEVATION) - (SECTION A-A)



I-7 HATTA PARAPETS WALL TYPE-15, TYPE-16 & TYPE-17

(PLAN TYPE-15) - (PLAN TYPE-16) - (PLAN TYPE-17) - (ELEVATION) - (SECTION A-A)



TRADITIONAL AREESH

	Page No
• J-1 Hatta Village Traditional Areesh	147
• J-2 Hatta Village Traditional Areesh	150
• J-3 Hatta Village Traditional Areesh	154
• J-4 Hatta Village Traditional Areesh	155
• J-5 Areesh Rest. Hut's Model - Hatta Historic Area	158
• J-6 Areesh Rest. Hut's Model - Hatta Historic Area	160
• J-7 Areesh Rest. Hut's Model - Hatta Historic Area	162



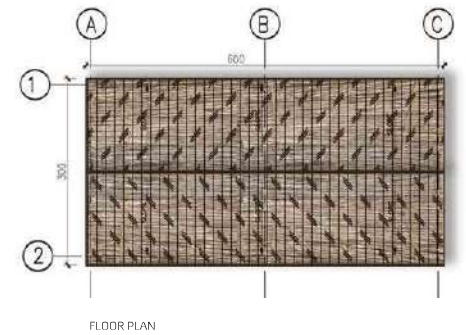
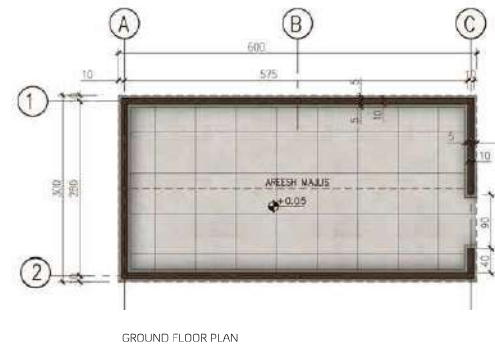


Traditional Areesh

Traditional Areesh is a simple house built of local materials (stem, leaves, and wicker of palm trees) that may be built on ground floor or two floors.

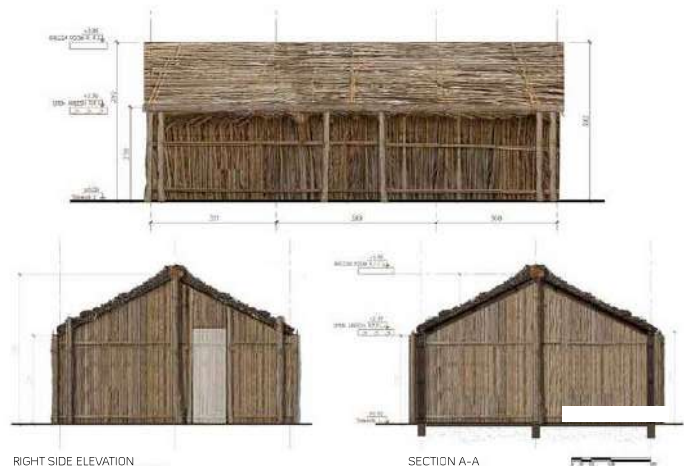
J-1 HATTA VILLAGE TRADITIONAL AREESH

PLAN



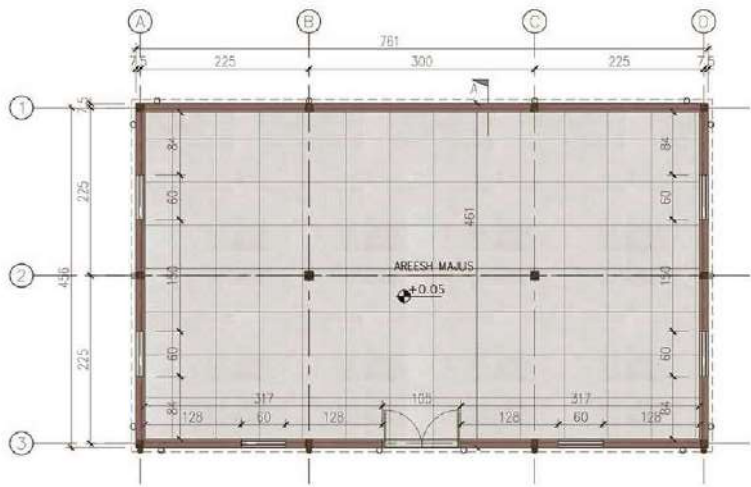
J-1 HATTA VILLAGE TRADITIONAL AREESH

RIGHT SIDE ELEVATION & SECTION-A-A



J-2 HATTA VILLAGE TRADITIONAL AREESH

PLAN



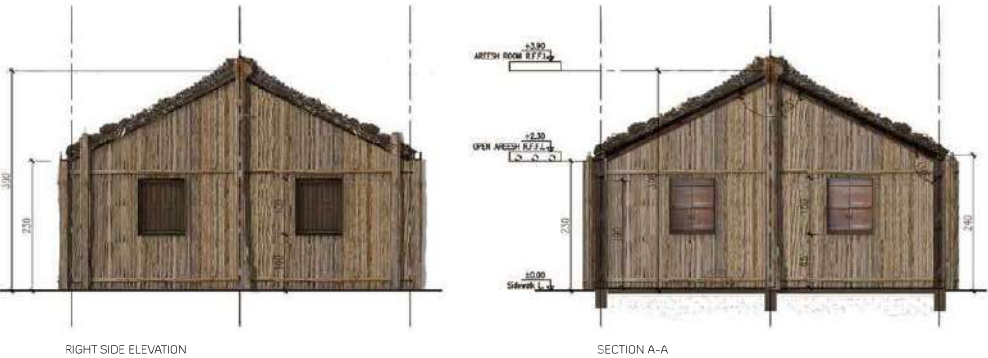
J-2 HATTA VILLAGE TRADITIONAL AREESH

FRONT ELEVATION



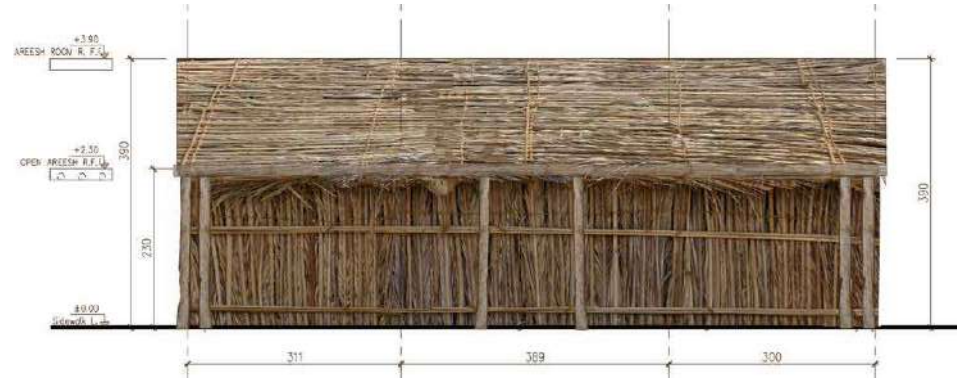
J-2 HATTA VILLAGE TRADITIONAL AREESH

RIGHT SIDE ELEVATION SECTION-A-A



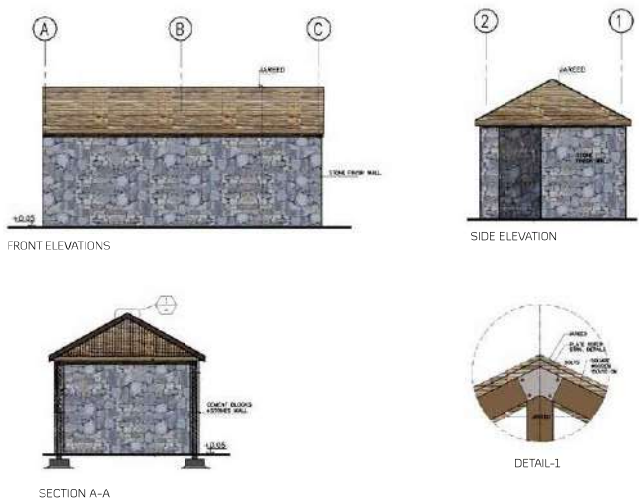
J-2 HATTA VILLAGE TRADITIONAL AREESH

BACK SIDE ELEVATION



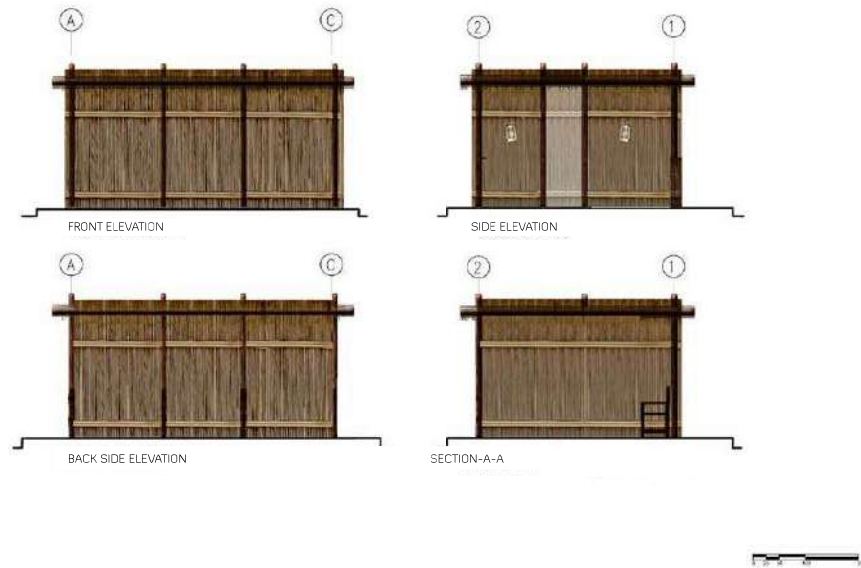
J-3 HATTA VILLAGE TRADITIONAL AREESH

FRONT, SIDE ELEVATION & SECTION



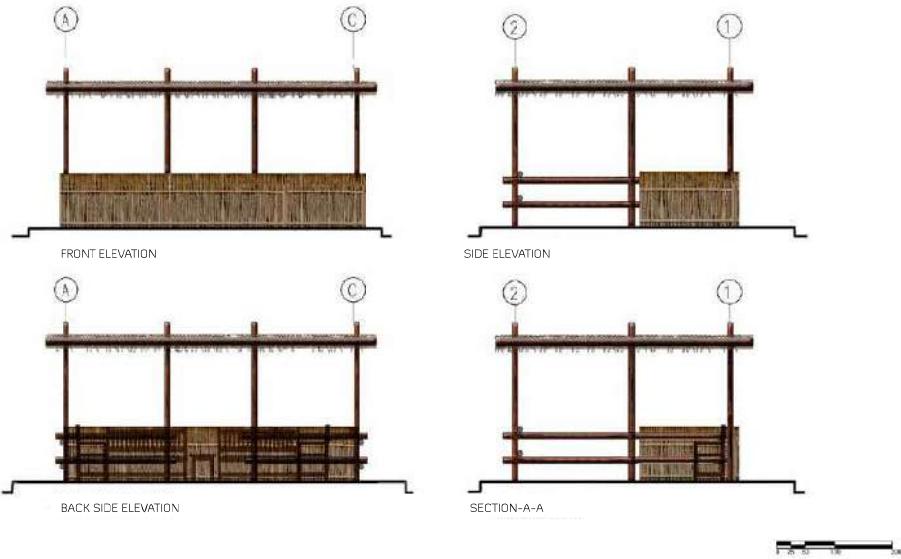
J-4 HATTA VILLAGE TRADITIONAL AREESH

FRONT, RIGHT, BACK SIDE ELEVATION & SECTION



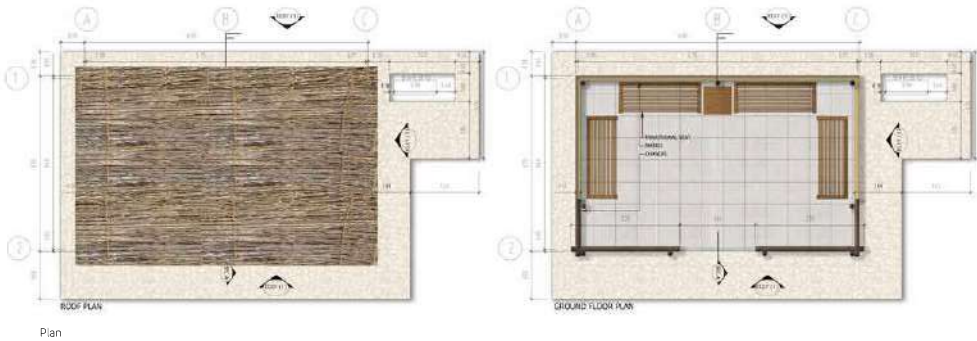
J-5 AREESH REST HUT'S MODEL - HATTA HISTORIC AREA

AREESH REST HUT'S MODEL 1 - HATTA HISTORIC AREA



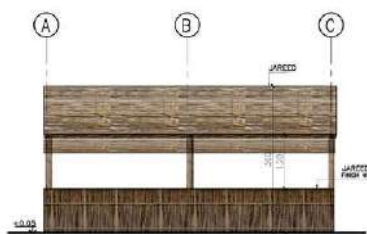
J-5 AREESH REST HUT'S MODEL - HATTA HISTORIC AREA

AREESH REST HUT'S MODEL 1 - HATTA HISTORIC AREA



J-6 AREESH REST HUT'S MODEL - HATTA HISTORIC AREA

AREESH REST HUT'S MODEL 2 - HATTA HISTORIC AREA



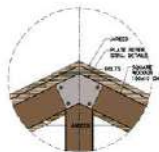
FRONT ELEVATION



SIDE ELEVATION



SECTION-A-A

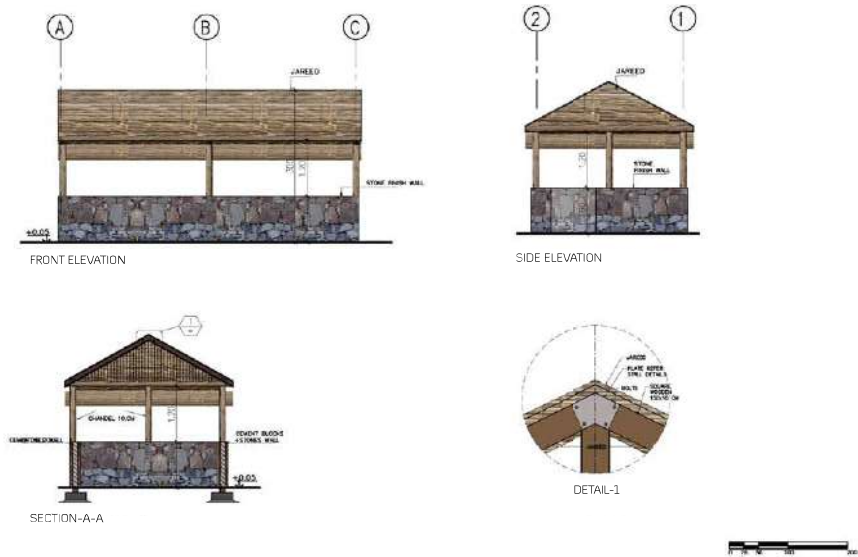


DETAIL-1



J-7 AREESH REST HUT'S MODEL - HATTA HISTORIC AREA

AREESH REST HUT'S MODEL 3 - HATTA HISTORIC AREA



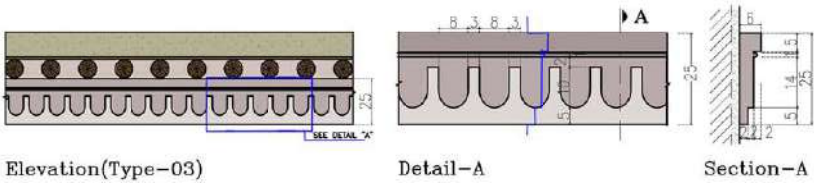
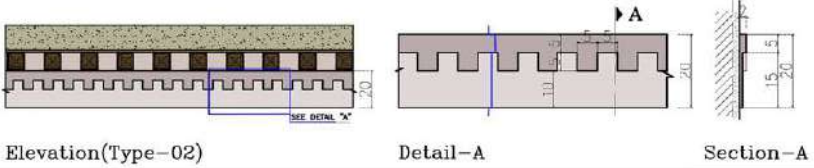
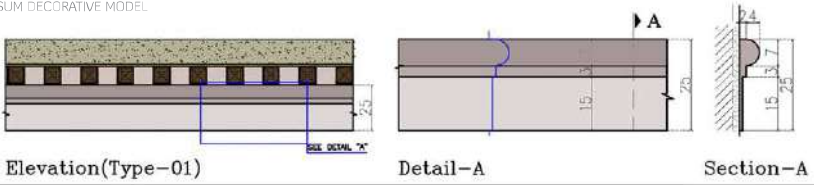
HATTA TRADITIONAL STRIP DECORATIVE

	Page No.
• K-1 Hatta Traditional Gypsum Strip Decorative-Historic Area	166
• K-2 Hatta Traditional Gypsum Strip Decorative-Historic Area	167
• K-3 Hatta Traditional Gypsum Strip Decorative-Historic Area	168
• K-4 Hatta Traditional Gypsum Strip Decorative-Historic Area	169
• K-5 Hatta Traditional Gypsum Strip Decorative-Historic Area	170
• K-6 Hatta Traditional Wooden Strip Decorative-Historic Area	171
• K-7 Hatta Traditional Gypsum Decorative	172
• K-8 Hatta Traditional Gypsum Decorative	173
• K-9 Hatta Traditional Wooden Strip Decorative	174
• K-10 Hatta Traditional Wooden Strip Decorative	175



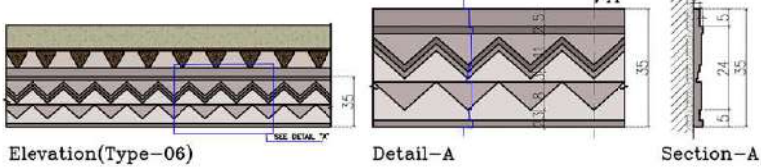
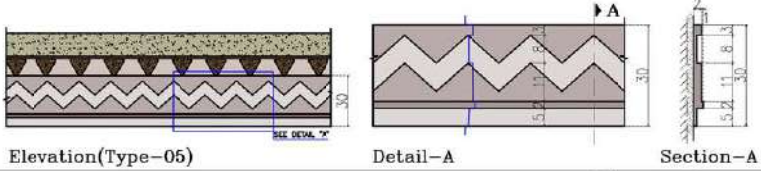
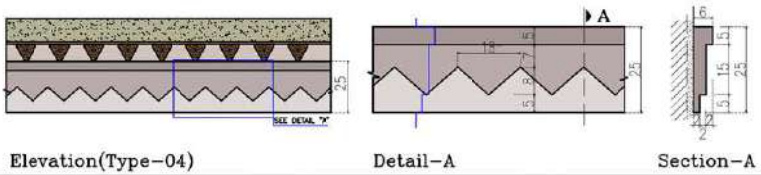
K-1 HATTA TRADITIONAL STRIP DECORATIVE - HISTORIC AREA

STRIP GYPSUM DECORATIVE MODEL

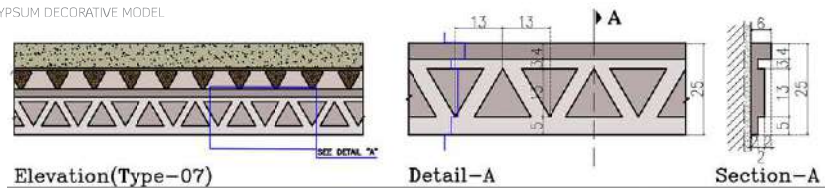
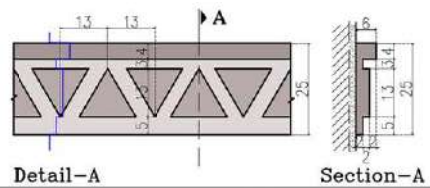


K-2 HATTA TRADITIONAL STRIP DECORATIVE - HISTORIC AREA

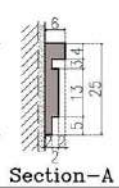
STRIP GYPSUM DECORATIVE MODEL



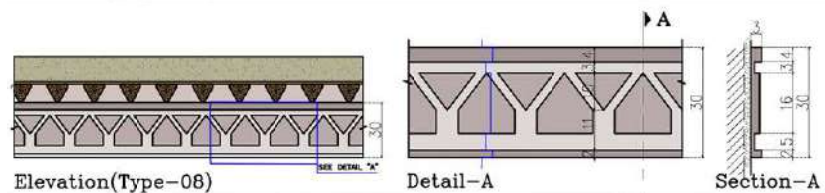
STRIP GYPSUM DECORATIVE MODEL

Elevation(Type-07)

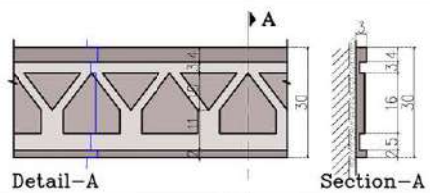
Detail-A



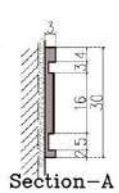
Section-A



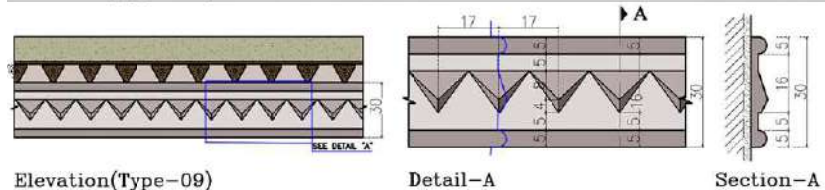
Elevation(Type-08)



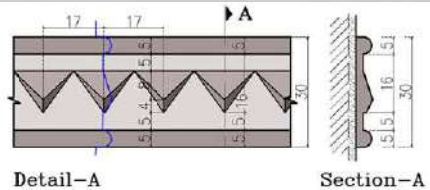
Detail-A



Section-A



Elevation(Type-09)

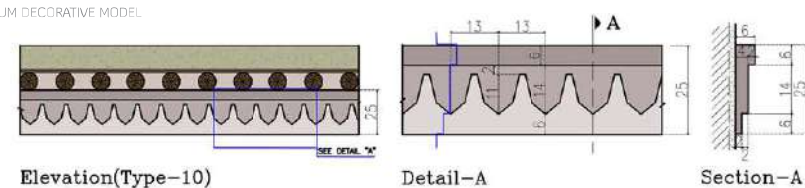


Detail-A

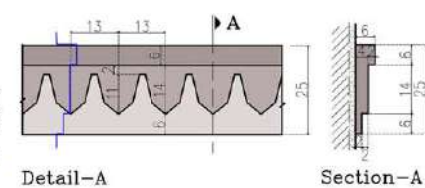


Section-A

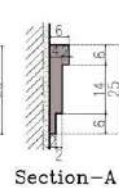
STRIP GYPSUM DECORATIVE MODEL



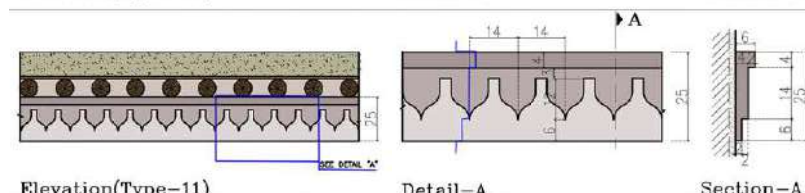
Elevation(Type-10)



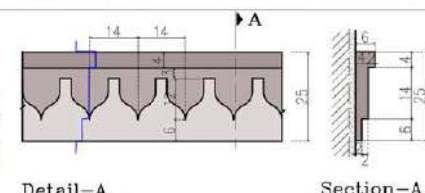
Detail-A



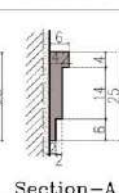
Section-A



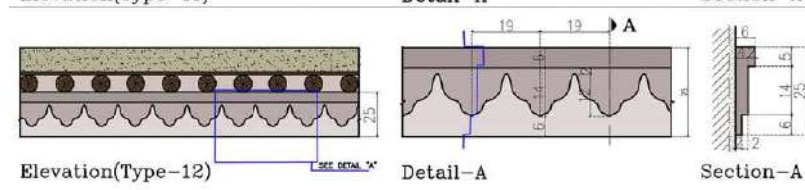
Elevation(Type-11)



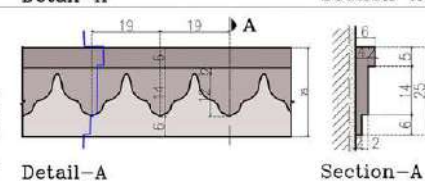
Detail-A



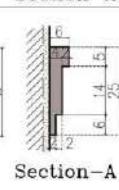
Section-A



Elevation(Type-12)



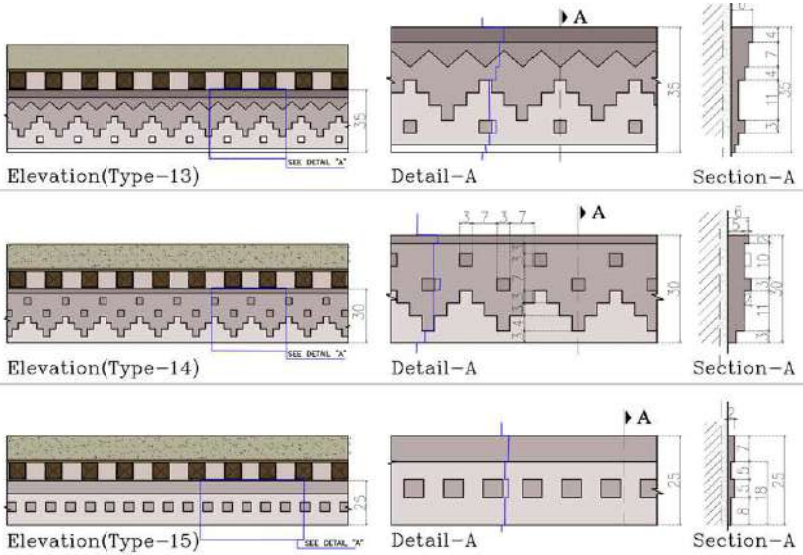
Detail-A



Section-A

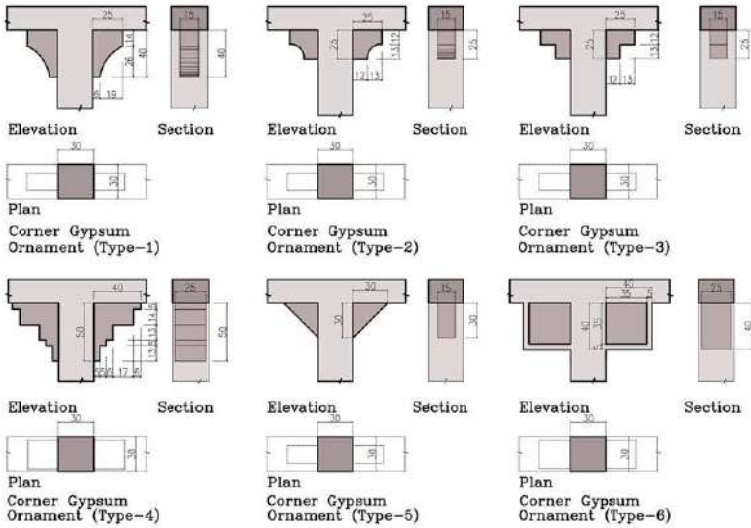
K-5 HATTA TRADITIONAL STRIP DECORATIVE - HISTORIC AREA

STRIP GYPSUM DECORATIVE MODEL



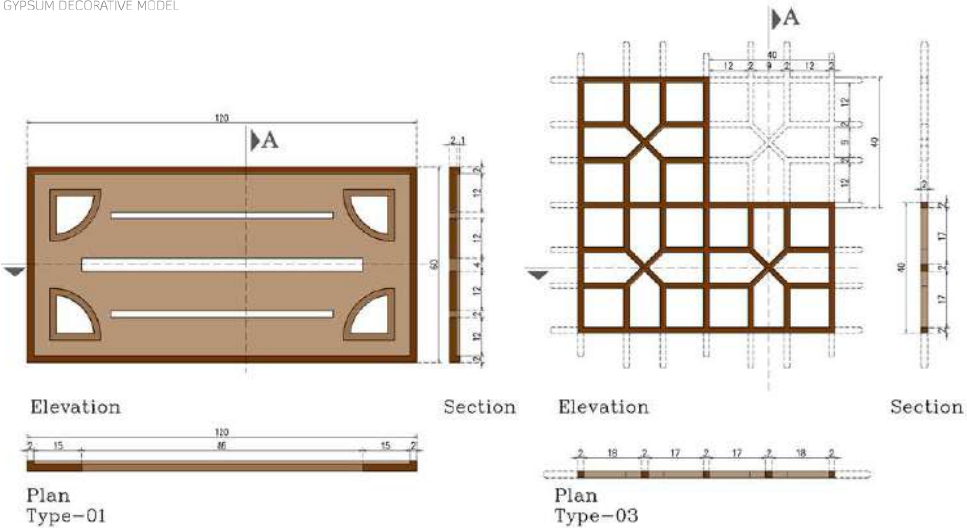
K-6 HATTA TRADITIONAL CORNER DECORATIVE

CORNER GYPSUM DECORATIVE



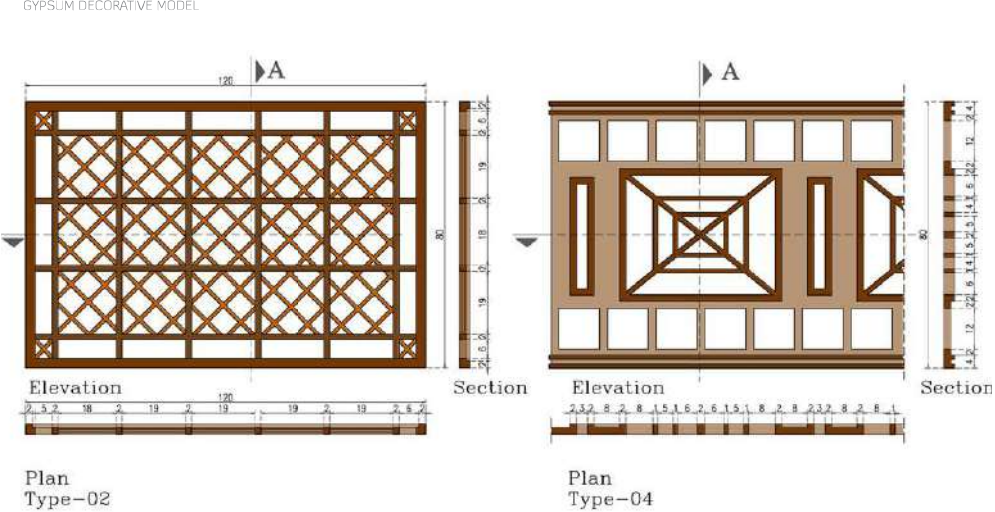
K-7 HATTA TRADITIONAL GYPSUM DECORATIVE

GYPSUM DECORATIVE MODEL

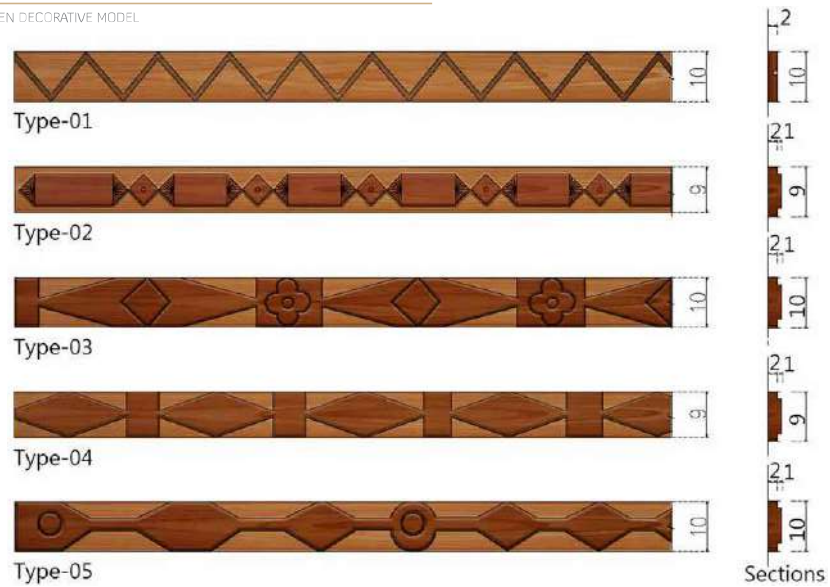


K-8 HATTA TRADITIONAL GYPSUM DECORATIVE

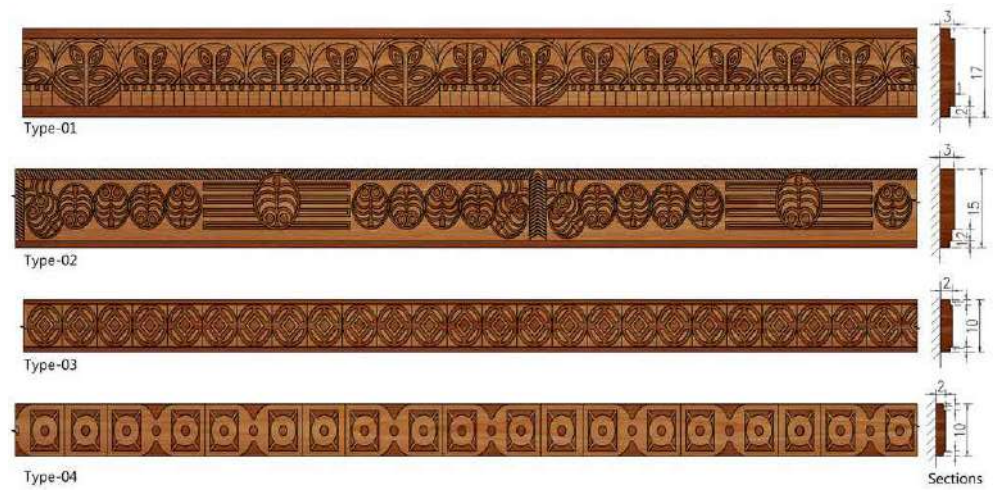
GYPSUM DECORATIVE MODEL



STRIP WOODEN DECORATIVE MODEL



STRIP WOODEN DECORATIVE MODEL





TRADITIONAL GUTTER

- L-1 Hatta Village Traditional Gutter Type 1
- L-2 Hatta Village Traditional Gutter Type 2

Page No.
179
180

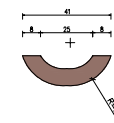


Water Gutter

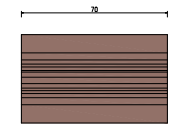
The Water Gutter is a tool that is designed to stream out the rainwater from the rooftop of the building. Occasionally it is made by wood or palm trunks, and happened to be one of the design elements that decorate the traditional building's facade.

L-1 HATTA VILLAGE TRADITIONAL GUTTER TYPE 1

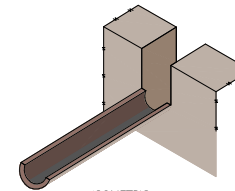
(PLAN) - (ISOMETRIC) - (FRONT ELEVATION) - (FIXING WALL GUTTER DETAIL) - (SECTION OF WALL GUTTER DETAIL)



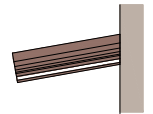
FRONT ELEVATION



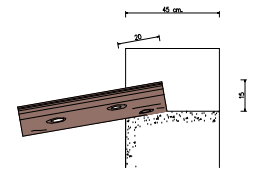
PLAN



ISOMETRIC



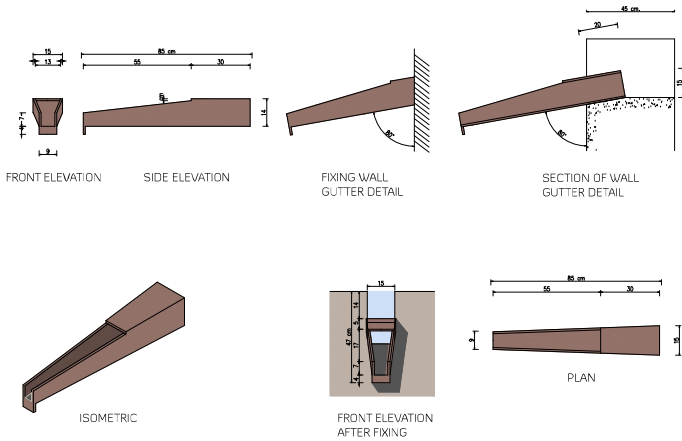
FIXING WALL GUTTER DETAIL



SECTION OF WALL GUTTER DETAIL

L-2 HATTA VILLAGE TRADITIONAL GUTTER TYPE 2

(PLAN) - (ISOMETRIC) - (FRONT ELEVATION) - (SIDE ELEVATION) - (FIXING WALL GUTTER
DETAIL) - (SECTION OF WALL GUTTER DETAIL) - (FRONT ELEVATION AFTER FIXING)



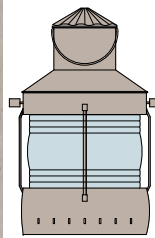
ACCESSORIES DETAILS		Page No.
• M-1	Hatta Traditional Hung Light Details (Typical-1)	184
• M-2	Hatta Traditional Hung Light Details (Typical-2)	185
• M-3	Hatta Traditional Chair Details	187
• M-4	Hatta Traditional Chair Details	188
• M-5	Hatta Traditional Chair Details	189
• M-6	Hatta Traditional Chair Details	190
• M-7	Hatta Traditional Chair Details	191



(MAIN VIEW) - (SIDE ELEVATION)



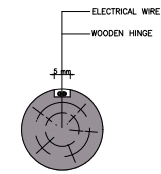
MAIN VIEW



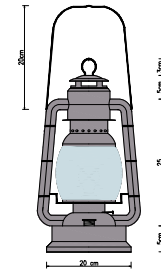
SIDE ELEVATION



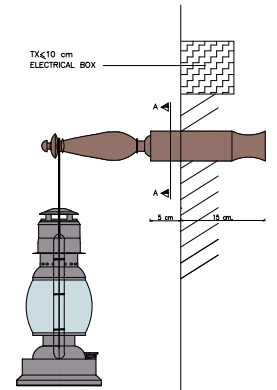
SECTION (A-A) - (MAIN VIEW) - (SIDE ELEVATION)



SECTION A-A



MAIN VIEW



SIDE ELEVATION

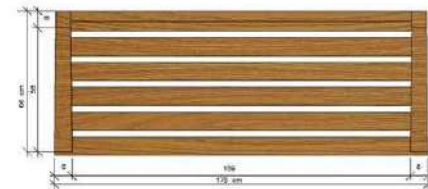
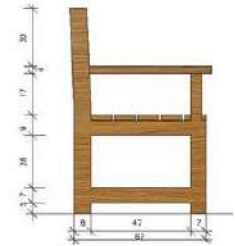
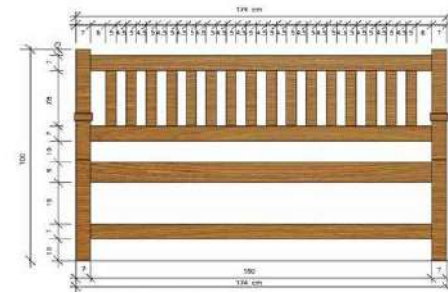


Traditional Chair

Traditional chair is an aesthetically designed seating. It is built according to the nature of materials and the builder's skills. It appears to be part of the building (detcha) or made of wood, palm trunks or metal. The seats formed an important part of housing components and furnishings of the Emirati houses.

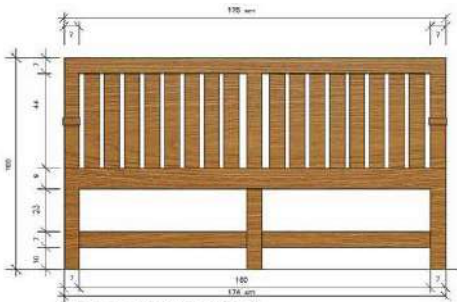
M-3 HATTA TRADITIONAL CHAIR DETAILS

(PLAN) - (REAR ELEVATION) - (SIDE ELEVATION)

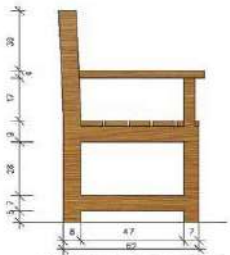


M-4 HATTA TRADITIONAL CHAIR DETAILS

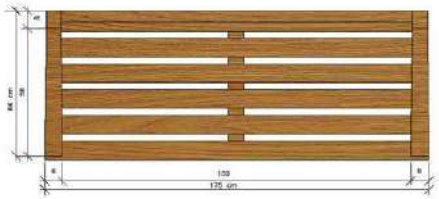
(PLAN) - (REAR ELEVATION) - (SIDE ELEVATION)



REAR ELEVATION



SIDE ELEVATION

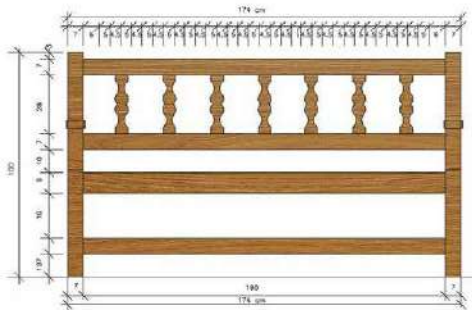


PLAN

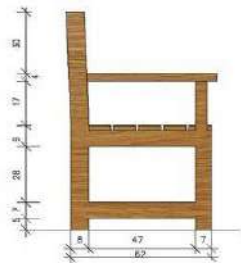


M-5 HATTA TRADITIONAL CHAIR DETAILS

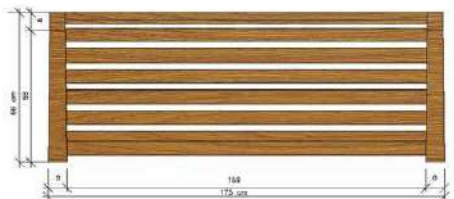
(PLAN) - (REAR ELEVATION) - (SIDE ELEVATION)



REAR ELEVATION



SIDE ELEVATION



PLAN



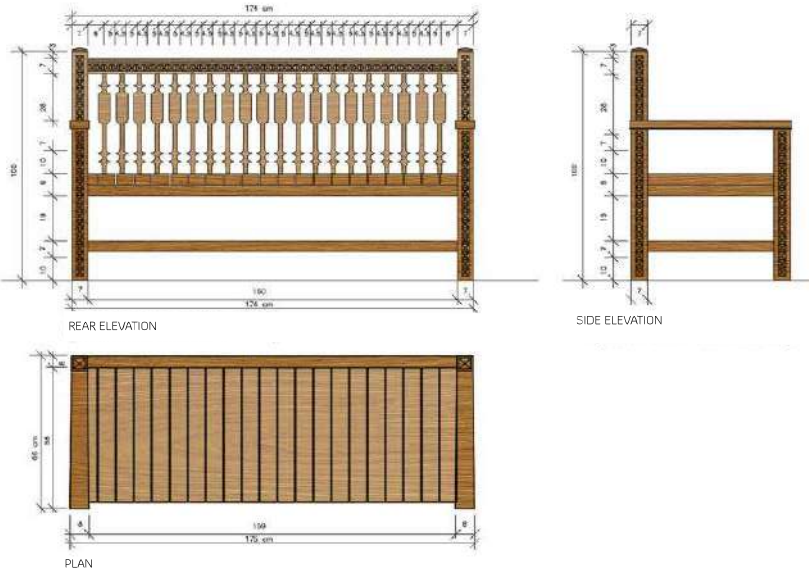
M-6 HATTA TRADITIONAL CHAIR DETAILS

(PLAN) - (REAR ELEVATION) - (SIDE ELEVATION)



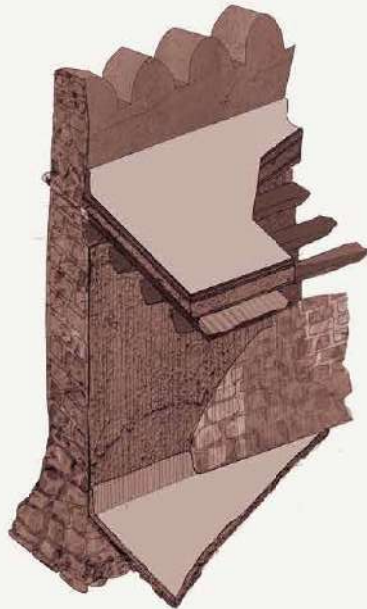
M-7 HATTA TRADITIONAL CHAIR DETAILS

(PLAN) - (REAR ELEVATION) - (SIDE ELEVATION)

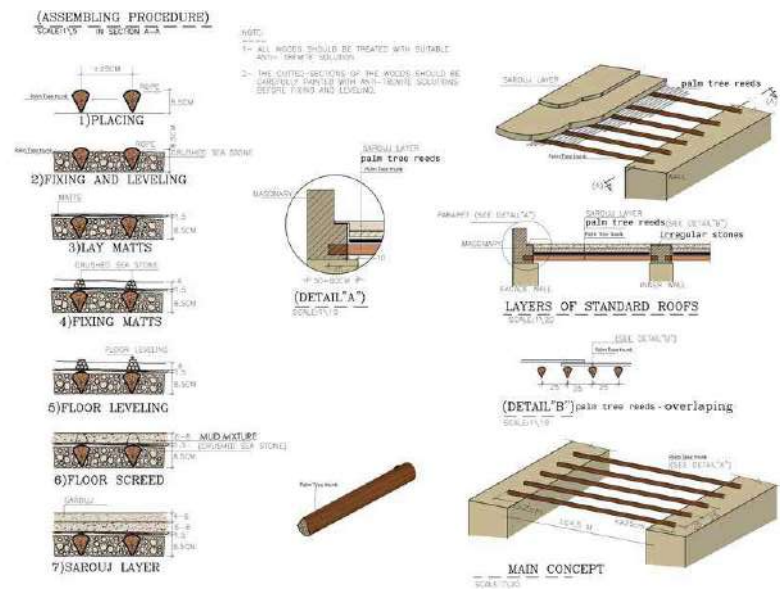


HATTA TRADITIONAL STRUCTURAL DETAILS

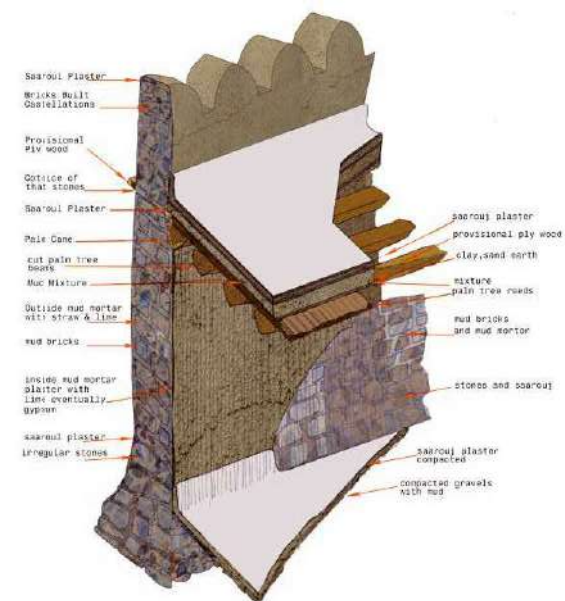
	Page No.
• N-1 Hatta Traditional Structural Details - Layers of Standard Roofs	194
• N-2 Hatta Traditional Structural Lintel Details	196
• N-3 Hatta Traditional Structural Bridge Details	197
• N-4 Hatta Traditional Structural Lintel Details	198
• N-5 Hatta Traditional Structural Air Puller Details	199
• N-6 Hatta Traditional Structural Lintel Details	200
• N-7 Hatta Traditional Structural Bridge Details	201



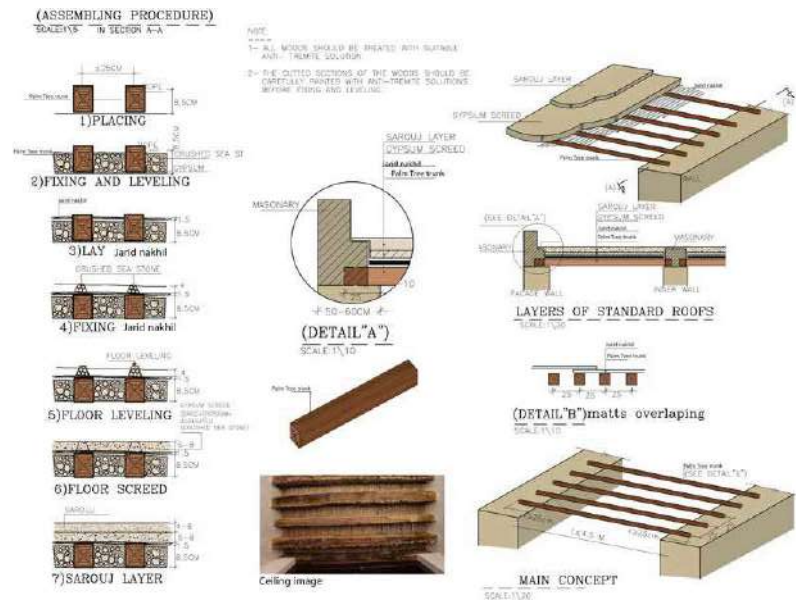
N-1 HATTA TRADITIONAL STRUCTURAL DETAILS - LAYERS OF STANDARD ROOFS



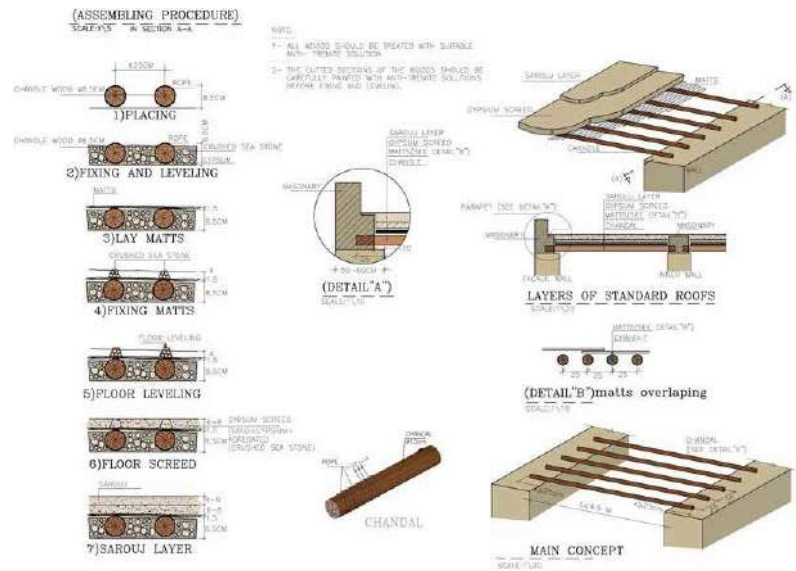
N-1 HATTA TRADITIONAL STRUCTURAL DETAILS - LAYERS OF STANDARD ROOFS



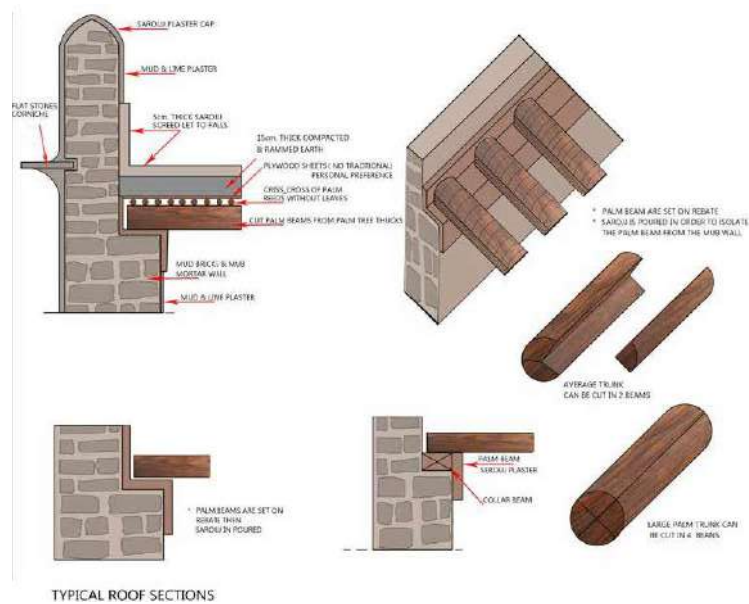
N-2 HATTA TRADITIONAL STRUCTURAL LINTEL DETAILS



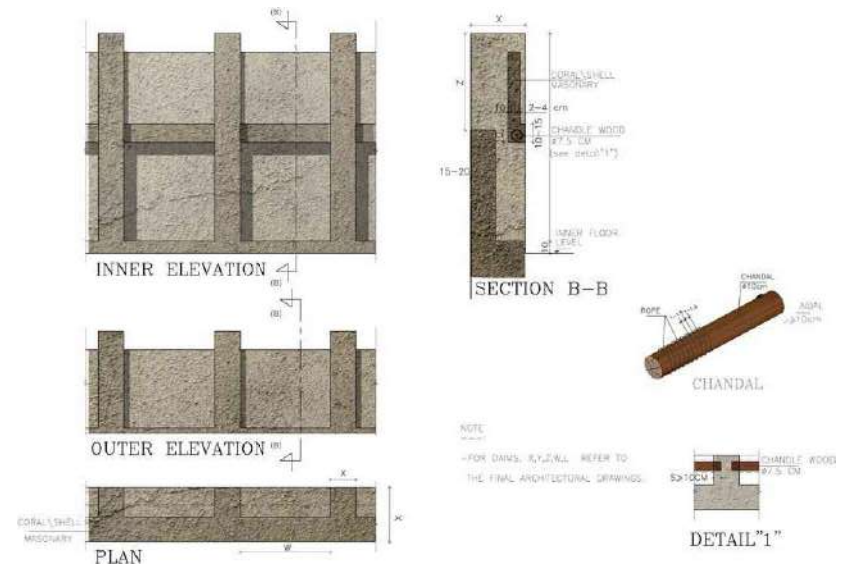
N-3 HATTA TRADITIONAL STRUCTURAL BRIDGE DETAILS



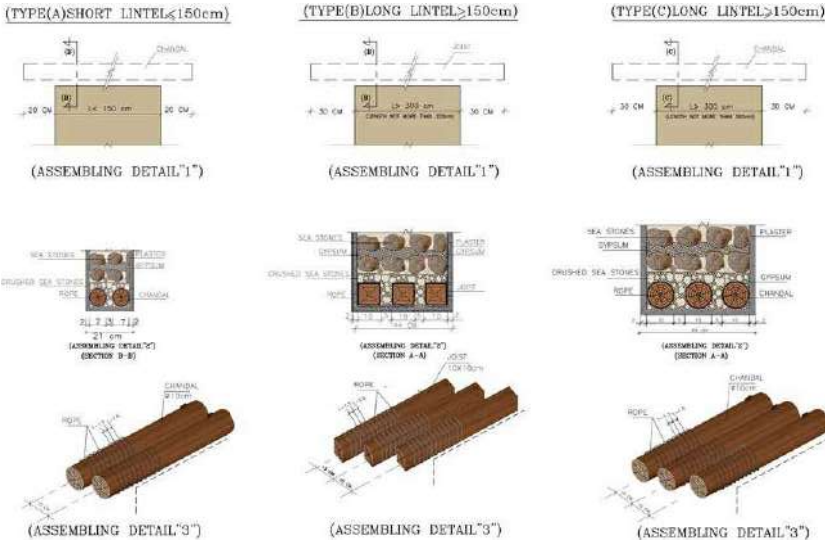
N-4 HATTA TRADITIONAL STRUCTURAL LINTEL DETAILS



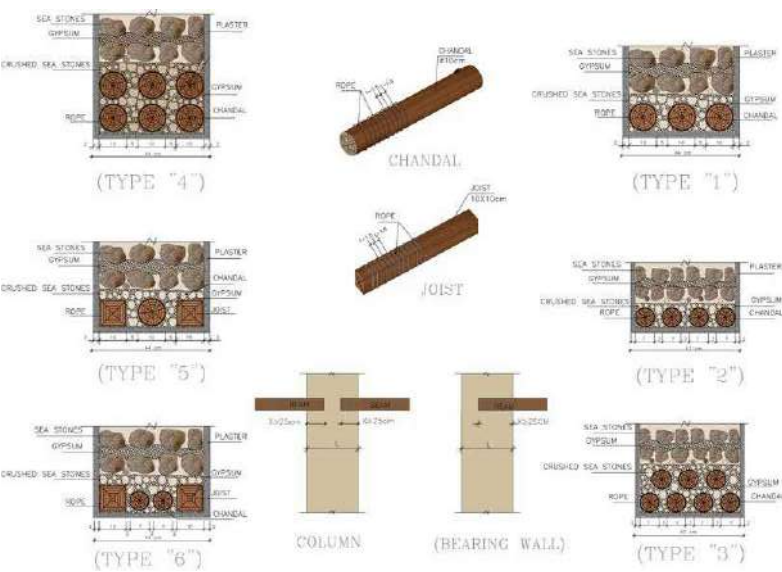
N-5 HATTA TRADITIONAL STRUCTURAL AIR PULLER DETAILS



N-6 HATTA TRADITIONAL STRUCTURAL LINTEL DETAILS



N-7 HATTA TRADITIONAL STRUCTURAL BRIDGE DETAILS



OTHER TRADITIONAL DOORS FROM DUBAI



OTHER TRADITIONAL DOORS FROM DUBAI



OTHER TRADITIONAL DOORS FROM DUBAI



OTHER TRADITIONAL DOORS FROM DUBAI



OTHER TRADITIONAL DOORS FROM DUBAI



OTHER TRADITIONAL DOORS FROM DUBAI



OTHER TRADITIONAL DOORS FROM DUBAI



OTHER TRADITIONAL DOORS FROM DUBAI



OTHER TRADITIONAL DOORS FROM DUBAI



OTHER TRADITIONAL DOORS FROM DUBAI



OTHER TRADITIONAL WINDOWS FROM DUBAI



OTHER TRADITIONAL WINDOWS FROM DUBAI





Hatta Historical village

Hatta village is located in the heart of Hatta mountain area within the emirate of Dubai, about 115 Km (71 miles) away from Dubai city.

It overlooks two mountains called traditionally “Hajaran” or “Hajarin” in olden days. The history of the village dates back to about 2,000 to 3,000 years ago.

Its authentic Arabic “heritage village” has the Hatta Fort with two military towers from the 18th century, an old Jumaa mosque (1780), 30 loamed residences, and shops selling traditional heritage collections are worth a visit.

A fresh water channel (Falaj) passes through a group of neighboring farms and an ancient cemetery. The village is a historic monument.